



News

CAP direct payments 2021: entitlements cut by 2.79% (Source: L'Informatore Agrario)

Agea coordinamento has calculated the balance of direct payments to be paid to farmers who have submitted the single application for the year 2021 and has finally closed the counts.

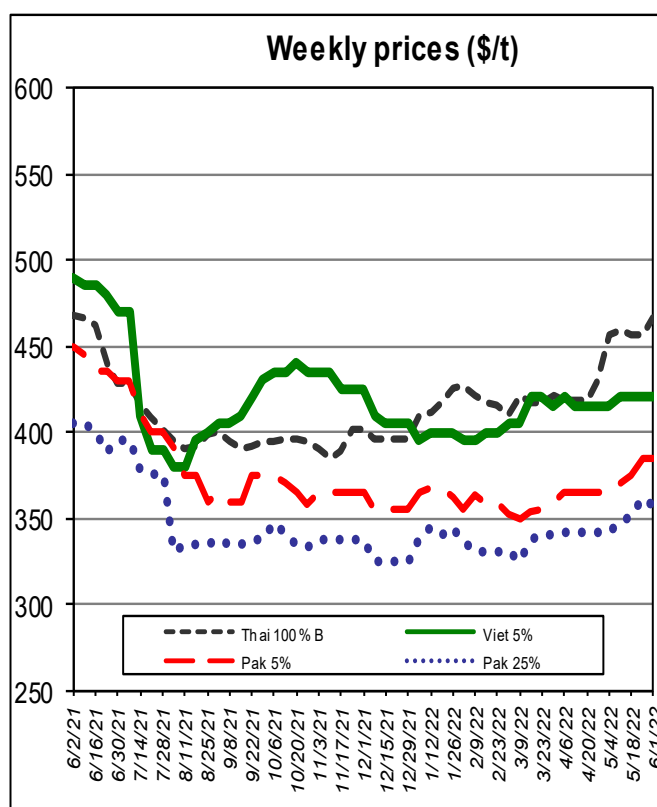
At this point, paying agencies can proceed to disburse what is due to farmers by the deadline of next June 30. In particular, Agea Circular No. 42855 of May 27, 2022, shows all the data needed for the basic payment, greening and youth supplement. Only one piece is missing to file the 2021 campaign, and that is the calculation of the final amounts for coupled support.

There is a negative surprise this year for the Pac beneficiaries and it is the linear reduction of 2.79% of all individual entitlements in the national register for the 2021 annuality. This occurred in order to find resources to be used for the beneficiaries of the national reserve and as a result of the decrease in the national ceiling for direct payments, decided by the European Union with the new 2021-2027 multiannual financial framework.

International Markets



Milled rice international FOB quotes		
Exchange rate 1 € = 1.0712\$		
Asian Markets	\$/t	€/t
Thai 100%B	467	436
Vietnam 5%	420	392
India 5%	345	322
Pakistan 5%	385	359
Pakistan 25%	357	333
Myanmar 5%	420	392
India Basmati trad.	1,705	1,592
Other Markets	\$/t	€/t
Uruguay 5%	545	509
Argentina 5%	510	476
Brasile Type 1	590	551
USA LG 2/4% Fob Bulk Nola	675	630
California MG 1/4% Med	1,410	1,316



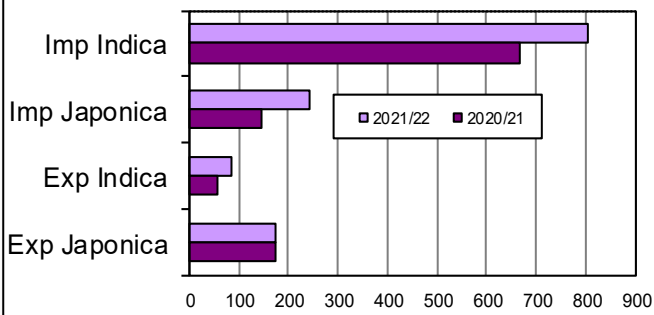
Food Safety

Rapid Alert System (Source: EFSA)

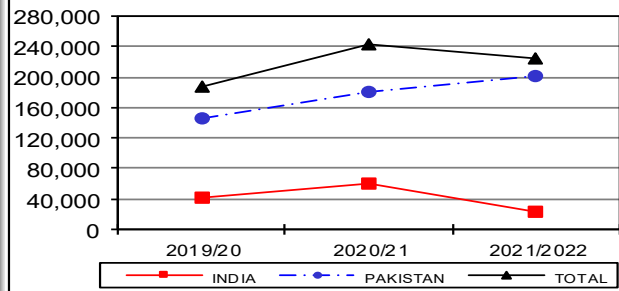
- A border rejection was sent by Spain concerning aflatoxin B1 ($11.1 \pm 24.2\%$ mg/kg - ppb), total aflatoxin ($12.1 \pm 24.2\%$ µg/kg - ppb) in rice from Pakistan.
- An alert was sent by Spain concerning aflatoxin B1 ($5.6 \pm 24.2\%$ µg/kg - ppb), total aflatoxin ($5.6 \pm 24.2\%$ µg/kg - ppb) in Basmati rice from Pakistan.
- An information for follow up was sent by Finland concerning tricyclazol (0.011 mg/kg - ppb), in Sona Masoori rice from India.
- A border rejection was sent by Netherland concerning aflatoxin B1 (7.1 µg/kg - ppb) in super Basmati brown rice from Pakistan.

European Market

Import Export EU ('000 tonnes milled rice equivalent)



Basmati husked rice imports (in tonnes)

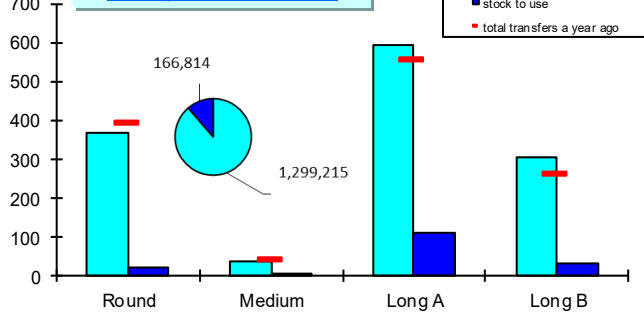


In focus

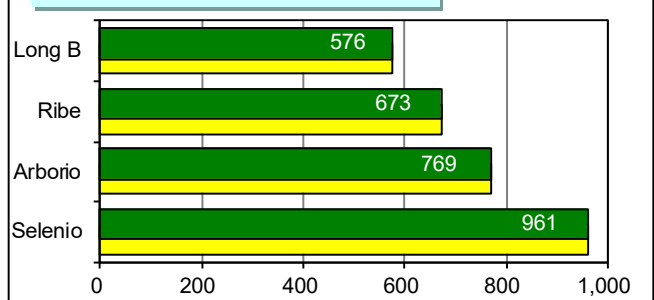
The data provided by the Commission, based on the quantities actually cleared through customs, shows that EU countries imported around 1,045,000 tons, in milled equivalent, compared to about 811,000 tons (excluding the UK) last year, marking an increase of about 234,000 tons (+29%). Both imports of Japonica type (about 242,000 t) and Indica type (about 803,000 t) are up 66% and 21% respectively. The Basmati husked rice imports showing an increase in volumes of rice of Pakistani origin (+11%) and a decrease for those of Indian origin (-62%). Overall, the quantities of Basmati husked rice amounted to 225,620 tons, down about 17,300 tons (-7%). EU exports amount to about 257,700 tons, in milled equivalent, down about 25,300 tons (-11%) from the previous campaign. Adding up to the 2020/21 marketing year the volumes exported to the UK in the period from 1/9/2020 to 31/12/2020, amounting to 70,160 tons, exports are, on the contrary, down by about 44,800 tons (-15%).

Italian Market

Paddy rice transfers



Paddy price
Vercelli Commodity Exchange (€/tonne)

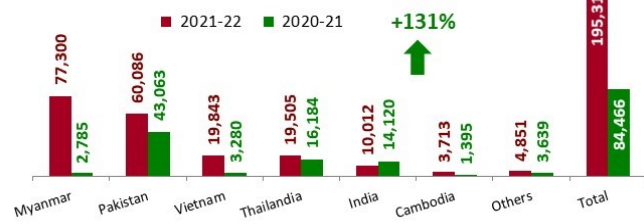


In focus

This week's paddy rice transfers involved 10,017 tons of "long A," 4,819 tons of "round," 3,375 tons of "long B" and 307 tons of "medium," for a total of 18,518 tons. Since the beginning of the marketing year, 1,299,215 tons of paddy rice have been transferred, marking an increase of 45,111 tons (+4%) from last year. The largest increases involve "long B" (+40,313 tons; +15%) and "long A" (+34,244 tons; +6%), while "round" and "medium" show declines of 24,760 tons (-6%) and 4,686 tons (-12%), respectively. At the Vercelli Stock Exchange, there is no change in reference quotations. The "nominal" wording has been added to all quotations. Since the beginning of the campaign, operators have applied for import licenses for a volume of 195,310 tons, in milled equivalent, marking an increase of 110,844 tons (+131%) from a year ago. Quantities actually cleared through customs reflect the trend in Agrim license applications, showing an increase of 61,197 tons (+69%). See table at the bottom of the page. Exports stand at 141,156 tons, in milled equivalent, up 22,150 tons (+19%) from a year ago and are broken down as follows: 71,427 tons of "long A," 46,934 tons of "round," 16,850 tons of "long B," and 5,945 tons of "medium." The increase is driven by volumes destined for the UK (56,356 tons), which last year were considered as exports only from January 1, 2021.

Import: husked + milled - till May 27, 2022

(tonnes in milled rice equivalent)
(Source: MAECI Agrim Licences)



Export: husked + milled - till May 27, 2022

(tonnes in milled rice equivalent)
(Source: Ente Risi Declarations)



Italian imports till May 29, 2022 - Customs declarations - Source: DG Agri (tonnes in milled rice equivalent)

Campaign	Paddy			Brown rice			Semi-milled / Milled rice			TOTAL		
	Indica	Japonica	Total	Indica	Japonica	Total	Indica	Japonica	Total	Indica	Japonica	TOTAL
2021/2022	9,548	-	9,548	40,189	1,728	41,917	57,787	40,668	98,455	107,524	42,396	149,920
2020/2021	7,998	-	7,998	36,054	553	36,607	41,009	2,809	43,818	85,061	3,362	88,423

Ente Nazionale Risi - Milan

c.f. 03036460156 www.enterisi.it e-mail: info@enterisi.it tel. +39 02.88.55.111 fax +39 02.30.13.10.84