



News

Rifit 2021 authorised for 120 days (Source: Ente Nazionale Risi)

Under Article 53 of EC Reg. 1107/2009, the active substance pretilachlor, placed on the market under the name Rifit 2021, has been authorised for an emergency situations in plant protection for 120 days starting from 23/03/2021.

Last year's provisions and modalities of use are maintained:

- **Pre-sowing:** apply approximately one month before sowing at 2-2.5 l/ha.
The treatment must be carried out on a submerged paddy field, keeping the water still for 4-6 days. Afterwards, the soil must be kept submerged until sowing to ensure effectiveness.
- **Post-emergence:** apply at 2 l/ha from the first true leaf of rice. The application must be carried out on dry rice fields.

This herbicide controls the following annual weeds: *Cyperus difformis*, *Echinochloa* spp., *Eleocharis* spp., *Heteranthera limosa*, *Heteranthera reniformis*, *Schoenoplectus mucronatus*. The product is effective in preventing blue algae (such as *Cyanophyceae*, etc.).

IMPORTANT: This year's label allows the application of the product also in SCI, SPA and Natura 2000 areas.

[Link to the commercial product label](#)

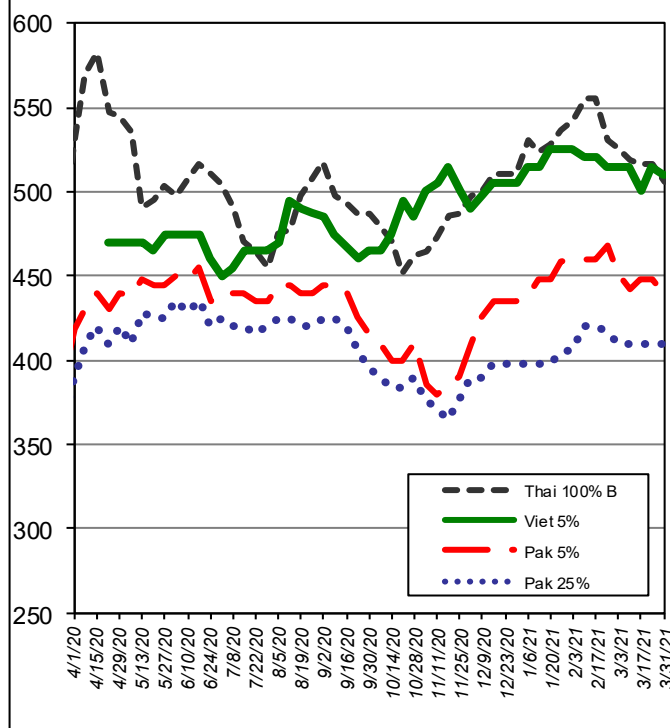
International Markets

Milled rice international FOB quotes

Exchange rate 1 € = 1.1741 \$

Asian Markets	\$/t	€/t
Thai 100%B	506	431
Vietnam 5%	510	434
India 5%	415	353
Pakistan 5%	438	373
Pakistan 25%	410	349
Myanmar 5%	460	392
India Basmati trad.	1,425	1,214
Other Markets	\$/t	€/t
Uruguay 5%	620	528
Argentina 5%	600	511
Paraguay 5%	560	477
USA LG 2/4% Fob Bulk Nola	610	520
California MG 1/4% Med	930	792

Weekly prices (\$/t)



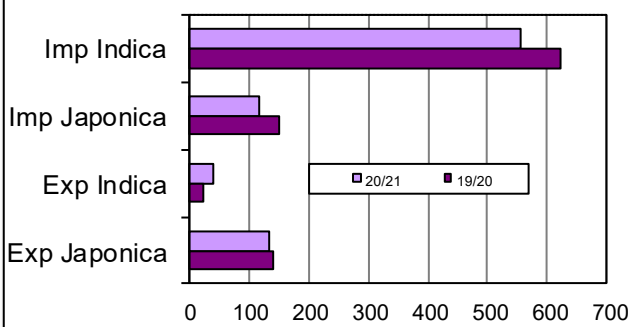
Food Safety

Rapid Alert System (Source: EFSA)

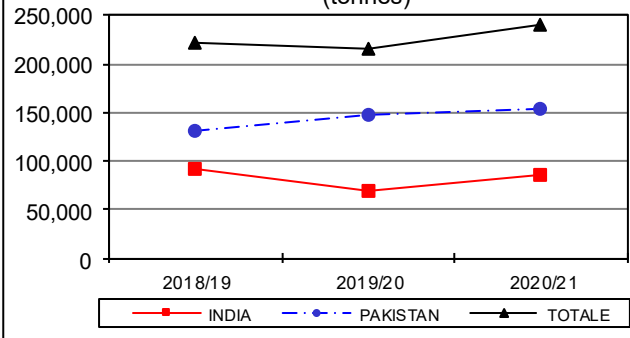
An information for follow-up was sent by Germany concerning unauthorised substance tricyclazole (0.018 µg/kg - ppb) in basmati rice from the Netherlands.

European Market

Import Export EU ('000 tonnes milled rice equivalent)



Basmati husked rice imports (tonnes)

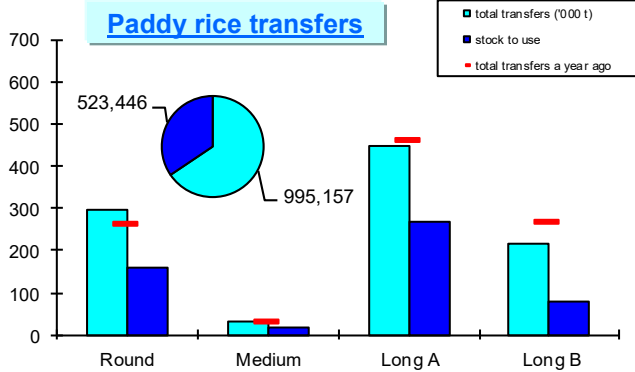


In focus

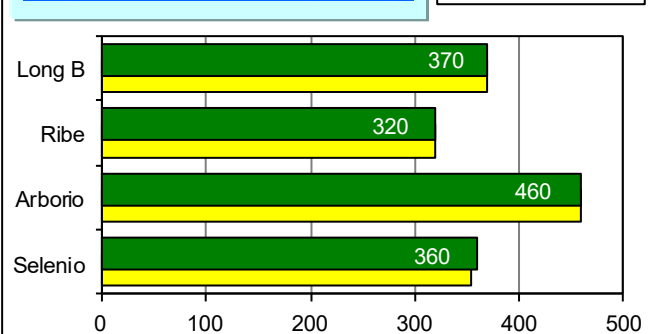
The volumes cleared through EU customs till 28 March 2021 amount to 671,234 tonnes, in milled equivalent, 101,136 tonnes (-13%) less than last campaign when amounted to 772,370 tonnes. Not considering the United Kingdom's volumes (from 1 September to 31 December 2020) for both the campaigns, imports decreased by about 31,800 tonnes (-4.5%). With 114,793 tonnes, the Netherlands are the main importer country in the EU, followed by France with 109,108 tonnes. Husked Basmati rice imports increased by 7,227 tonnes (+5%) compared to last year, amounting to 239,561 tonnes: 153,996 tonnes came from Pakistan and 85,565 tonnes from India. EU exports, amounting to 174,356 tonnes, in milled equivalent, of which 39,750 were Indica rice and 134,606 Japonica rice, increased by 10,874 tonnes (+7%) compared to last year.

Italian Market

Paddy rice transfers



Paddy price - Vercelli Commodity Exchange



In focus

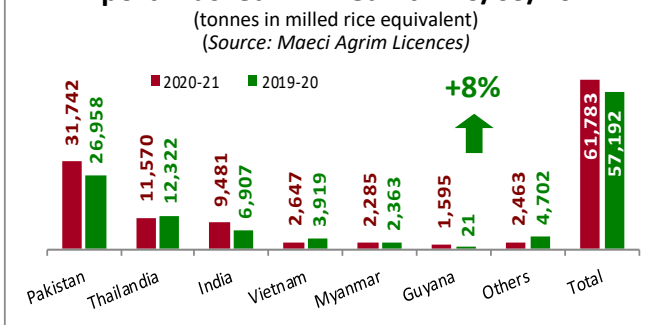
In the last week paddy rice transfers by farmers reached 28,095 tonnes: 13,522 tonnes of long A grain, 12,078 tonnes of round grain, 2,017 tonnes of long B grain and 478 tonnes of medium grain. The total transfers amount to 995,157 tonnes, 30,507 tonnes less (-3%) compared to last campaign. The total transfers account for 65.5% of the total supply, in particular 74% for long B grain, 65% for round grain, 63% for long A grain and 62% for medium grain.

At Commodity Exchange in Vercelli, the paddy prices increased for Selenio (+€ 5).

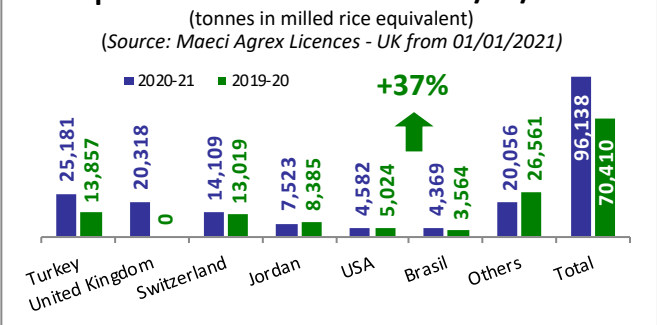
Italian rice imports amount to 61,783 tonnes, in milled equivalent, 4,591 tonnes (+8%) more than last year. The volumes cleared through customs (see table at the bottom) increased by 10,000 tonnes (+17.5%) year on-year: Indica rice imports increased by 23% while Japonica rice imports decreased by 46%.

Italian exports increased by 25,728 tonnes (+37%) compared to last year. During the last week, export licences were issued for 3,465 tonnes, of which 1,198 tonnes were with destination the United Kingdom.

Import: husked + milled - till 26/03/2021



Export: husked + milled - till 26/03/2021



Italian imports till 28/03/2021 - Customs declarations - Source: DG Agri (tonnes in milled rice equivalent)

Campaign	Paddy			Brown rice			Semi-milled / Milled rice			TOTAL		
	Indica	Japonica	Total	Indica	Japonica	Total	Indica	Japonica	Total	Indica	Japonica	TOTAL
2020/2021	4,414	-	4,414	27,436	522	27,958	32,217	2,136	34,353	64,067	2,658	66,725
2019/2020	3,949	-	3,949	21,565	1,584	23,149	26,369	3,314	29,683	51,883	4,898	56,781