



## News

### EU industry against Indian Basmati PGI (Source: Ente Nazionale Risi Note)

On 11 September, the European Commission published in the Official Journal an application by India for registration of the name "Basmati PGI" in the EU. The legislation provides that "Within three months from the date of publication in the Official Journal of the European Union, the authorities of a Member State or of a third country, or a natural or legal person having a legitimate interest and established in a third country may lodge a notice of opposition with the Commission", meaning that the right of opposition will expire on 11 December.

Immediately afterwards, the Pakistani operators were in a bad mood because Pakistan also produces Basmati rice, so that the Government of Islamabad decided to oppose India's application on 22 September.

According to a Pakistani website (<https://profit.pakistantoday.com.pk/2020/11/03/importers-of-pakistans-basmati-rice-to-challenge-indian-gi-claims-in-eu/>), Pakistan will be challenging the Indian application in the EU by the first week of December, but also European rice mills, which process husked rice imported from Pakistan, are also planning to lodge a notice of opposition.

### Syria issues tender to buy 25,000 tonnes of white rice (Source: www.zawya.com)

A Syrian state purchasing agency has issued an international tender to purchase 25,000 tonnes of white rice, European traders said on Monday.

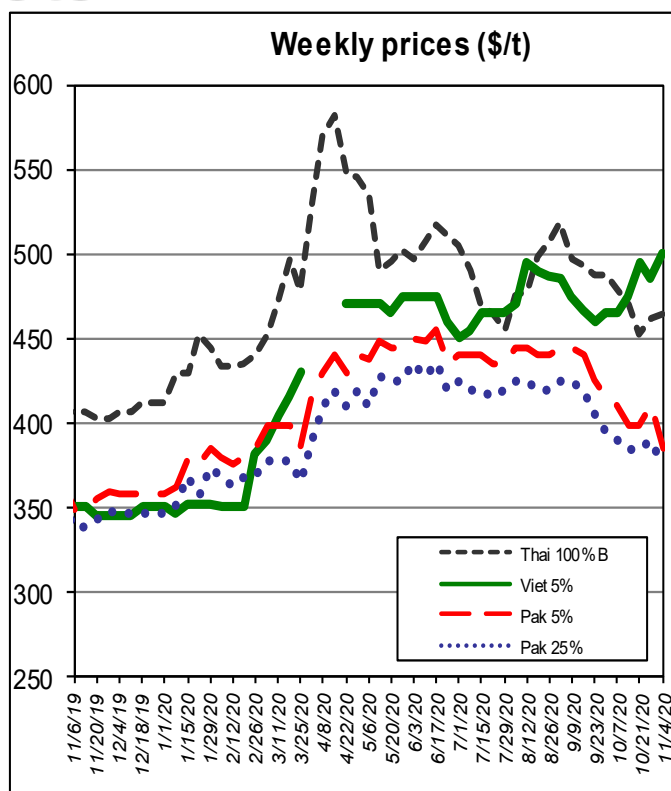
The tender from Syria's General Foreign Trade Organisation closes on Dec. 2, they said. White Chinese rice or Egyptian short grain rice is sought. A separate tender from the agency for 39,400 tonnes of white rice closes on Nov. 23.

## International Markets

### Milled rice international FOB quotes

Exchange rate 1 € = 1.1721

| Asian Markets            | \$/t  | €/t   |
|--------------------------|-------|-------|
| Thai 100%B               | 464   | 396   |
| Vietnam 5%               | 500   | 427   |
| India 5%                 | 350   | 299   |
| Pakistan 5%              | 385   | 328   |
| Pakistan 25%             | 376   | 321   |
| Myanmar 5%               | 440   | 375   |
| India Basmati trad.      | 1,375 | 1,173 |
| Other Markets            | \$/t  | €/t   |
| Uruguay 5%               | 620   | 529   |
| Argentina 5%             | 600   | 512   |
| Paraguay 5%              | 560   | 478   |
| USA LG 2/4 Fob Bulk Nola | 610   | 520   |
| California MG 1/4 Med    | 835   | 712   |



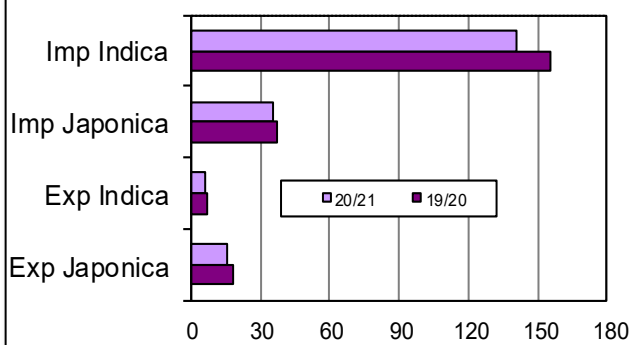
## Food Safety

### Rapid Alert System (Source: EFSA)

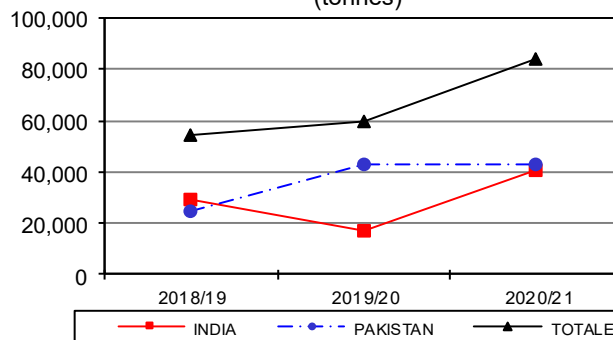
No alert concerning rice.

# European Market

**Import Export EU** ('000 tonnes milled rice equivalent)



**Basmati husked rice imports** (tonnes)



## In focus

Due to a technical issue, the Commission was not able to update the volume cleared through customs in EU. The import/export graph refers to data for 25 October. Data based on licence applications by European operators, updated to 3 November, show that imports amount to 194,376 tonnes, in milled equivalent, down by 30,423 tonnes (-14%) compared to last year. Demand for exports, on the other hand, increased by about 1,000 tonnes (+3%), from 34,709 tonnes a year ago to 35,711 tonnes today. Husked Basmati rice imports, equal to 84,280 tonnes, increased by 24,270 tonnes (+40%) compared to last campaign: imports from Pakistan, amounting to 43,295 tonnes, are at the level recorded a year ago (+272 tonnes, +1%), while imports from India, amounting to 40,984 tonnes, increased by 23,998 tonnes (+141%). The United Kingdom, with 27,326 tonnes, accounts for 67% of the Basmati rice total volume imported from India.

# Italian Market

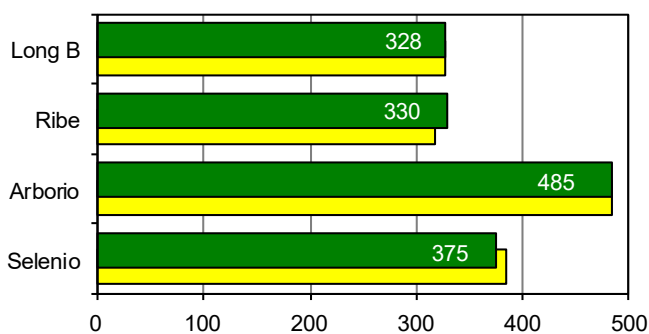
**Paddy**

**CAMPAIGN**

| TYPE OF RICE | 2020/21 tonnes | 2019/20 tonnes |
|--------------|----------------|----------------|
| ROUND        | 84,234         | 73,960         |
| MEDIUM       | 8,313          | 10,441         |
| LONG A       | 149,872        | 131,883        |
| LONG B       | 78,075         | 93,544         |
| <b>TOTAL</b> | <b>320,494</b> | <b>309,828</b> |

**Paddy price - Vercelli Commodity Exchange** (€/tonne)

■ last ■ previous



## In focus

In the last week paddy rice transfers by farmers reached 46,312 tonnes: 22,604 tonnes of long A grain, 12,566 tonnes of round grain, 8,909 tonnes of long B grain and 2,233 tonnes of medium grain. The total transfers, amounting to 320,494 tonnes, increased by 10,666 tonnes (+3%) compared to last campaign.

At Commodity Exchange in Vercelli, the paddy prices increased for Tipo Ribe (+€12) and decreased for Selenio (-€10).

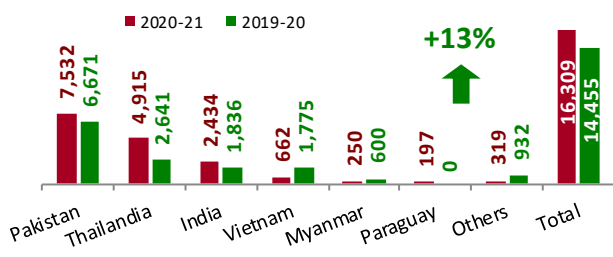
According to Agrim licences, Italian imports amount to 16,309 tonnes, in milled equivalent, 1,854 tonnes (+13%) more than a year ago.

The table at the bottom of the page, relating to the volumes cleared through customs, refers to 25 October because, due to technical issue, the Commission was unable to update it: imports decreased by 1,704 tonnes (-13%) compared to last year.

Italian exports amount to 18,264 tonnes, in milled equivalent, 3,232 tonnes (+22%) more than last year.

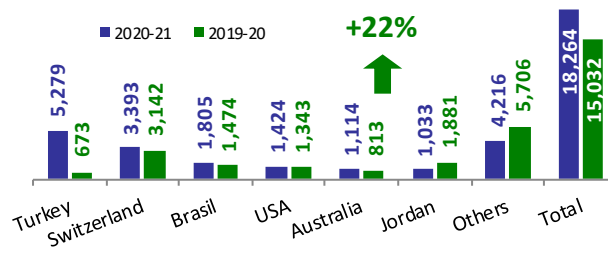
**Import: husked + milled - till 30/10/2020**

(tonnes in milled rice equivalent)  
(Source: Maeci Agrim Licences)



**Export: husked + milled - till 30/10/2020**

(tonnes in milled rice equivalent)  
(Source: Maeci Agrex Licences)



**Italian imports till 25/10/2020 - Customs declarations - Source: DG Agri** (tonnes in milled rice equivalent)

| Campaig   | Paddy  |          |       | Brown rice |          |       | Semi-milled / Milled rice |          |       | TOTAL  |          |        |
|-----------|--------|----------|-------|------------|----------|-------|---------------------------|----------|-------|--------|----------|--------|
|           | Indica | Japonica | Total | Indica     | Japonica | Total | Indica                    | Japonica | Total | Indica | Japonica | TOTAL  |
| 2020/2021 | 12     | -        | 12    | 4,545      | 329      | 4,874 | 5,747                     | 486      | 6,233 | 10,304 | 815      | 11,119 |
| 2019/2020 | -      | -        | -     | 5,350      | 1,481    | 6,831 | 5,287                     | 705      | 5,992 | 10,637 | 2,186    | 12,823 |