



News

Europarlament: new CAP from 2023 and no cuts (Source: L'informatore agrario)

The entry into force of the new CAP will be postponed from 2021 to 2023 if no new EU budget and reform are ready by 30 October. This is the position adopted by the Agriculture Committee of the European Parliament on the transitional regulation of the common agricultural policy prolonging the effectiveness of the CAP regulations beyond 2020.

Comagri also proposes that, if the EU 2021-27 multi-annual budget is not approved in time, the CAP spending ceilings should remain those of the 2020, effectively shielding farmers from the cuts proposed by the European Commission for the post-2020 financial period.

MEPs are also calling for an anti-crisis fund of over EUR 400 million in addition to the normal financial envelope.

The position adopted by the Agriculture Commission by remote vote will have to be negotiated with the Council of the EU: the aim is to come to an agreement by June 30th. Satisfaction with the indications of the European Parliament was expressed by Minister Teresa Bellanova, "In particular for the request to extend the current Pac while maintaining the current levels of funding, avoiding Italy cuts of almost 4% on direct payments and more than 15% on rural development".

Well also "the strengthening of the crisis reserve financial resources with non-Pac resources for 400 million per year; the strengthening of crisis management tools with a decrease from 30 to 20% of the minimum thresholds for loss of income or production also for mutual funds". Bellanova also thanked Paolo De Castro "for his great work and commitment" to achieve this result.

The market situation in Egypt (Source: www.livericeindex.com)

The FAO has estimated Egypt's 2019 paddy production at 6.69 million mt, up by 66.8% year-on-year and 1.98% above the five year average. While the government had set a limit on paddy planted area at 1.08 million feddans (451,500ha), farmers risked receiving fines to plant around 760,000 ha. Planting of the 2020 crop is underway. While rain has exceeded normal levels so far, the government has maintained its limit on paddy planted area at 1.08 million feddans.

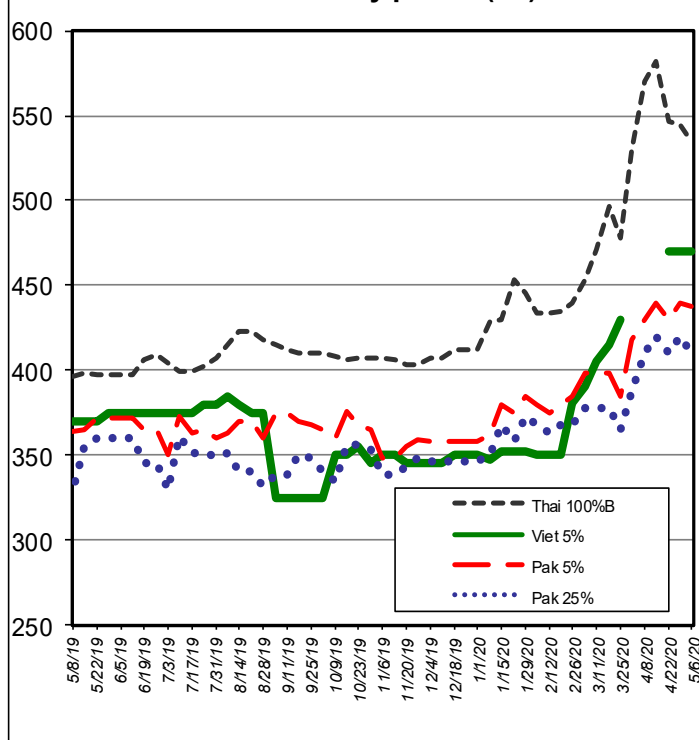
International Markets

Milled rice international FOB quotes

Exchange rate 1 € = 1.0807

Asian Markets	\$/t	€/t
Thai 100%B	535	495
Vietnam 5%	470	435
India 5%	380	352
Pakistan 5%	438	405
Pakistan 25%	410	379
Cambodia 5%	N.Q.	N.Q.
Myanmar 5%	445	412
India Basmati trad.	1,005	930
Other Markets	\$/t	€/t
Uruguay 5%	528	489
Argentina 5%	475	440
Paraguay 5%	465	430
USA LG 2/5% sacked	675	625
California MG 1/4% Med	950	879

Weekly prices (\$/t)



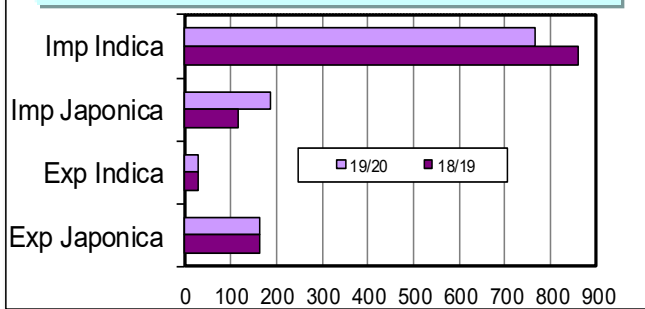
Food Safety

Rapid Alert System (Source: EFSA)

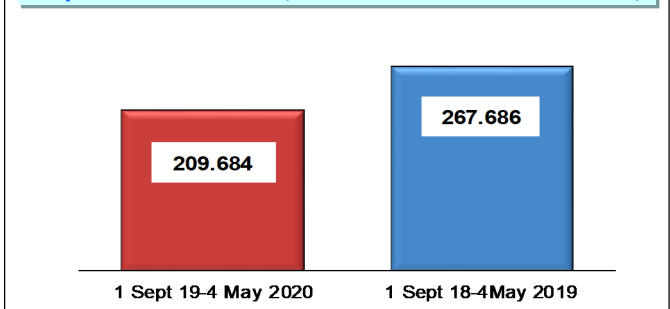
No alert concerning rice.

European Market

Import Export EU ('000 tonnes milled rice equivalent)



Imports from LDCs (tonnes of semi-milled and milled rice)



In focus

EU imports amounted to 954,487 tonnes, in milled equivalent, down 2% compared to a year ago. Husked rice imports and semi-milled/milled Indica rice, show a decrease of 2% and 19% respectively.

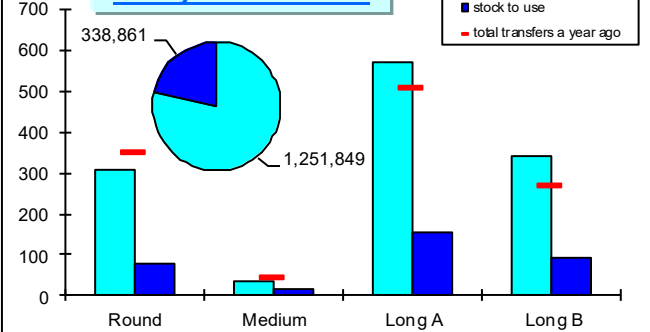
EU imports of semi-milled/milled rice from the LDCs, during the period 1 September 2019 - 4 May 2020, amounted to 209,684 tonnes, a decrease of 58,002 tonnes (-22%) compared to the same period of the previous campaign.

Cambodian rice imports fell by 31,892 tonnes to 114,050 tonnes (-22%); those from Myanmar, amounting to 95,634 tonnes, fell by 26,110 tonnes (-21%).

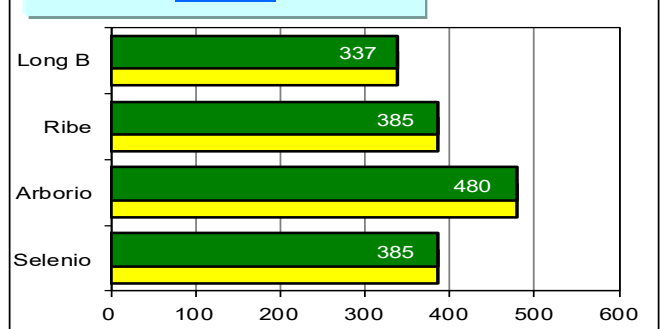
Exports decreased by about 1,500 tons (-1%), from 193,868 tonnes in the last marketing year to the current 192,330 tonnes.

Italian Market

Paddy rice transfers



Paddy price - Vercelli Commodity Exchange



In focus

This week's transfers of paddy rice involved 19,547 tonnes of "long A", 11,680 tonnes of "long B", 7,390 tonnes of "round" and 829 tonnes of "medium", for a total of 39,446 tonnes. Compared to a year ago, transfers increased by 82,848 tonnes (+7%). The "round" and "medium" paddy rices decreased by 39,261 and 9,280 tonnes, while the "long B" and "long A" paddy rices increased by 69,712 and 61,677 tonnes respectively.

At the Vercelli commodity exchange there is no change in the reference prices.

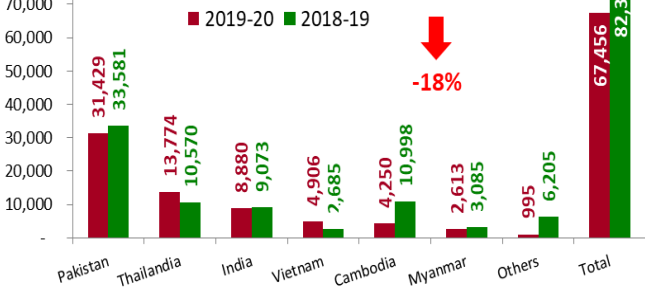
Imports of husked and semi-milled/milled rice amounted to 67,456 tonnes, of which 21,385 tonnes of Basmati rice, a decrease of about 14,800 tonnes (-18%) compared to last year. The quantities actually cleared through customs, at 67,437 tonnes, were down 29%.

Exports stood at 84,136 tonnes, in milled equivalent, down by 3,336 tonnes (-4%) compared to a year ago. "Long B" rice exports were up 26%: "round", "medium" and "long A" rice exports fell by 6%, 27% and 5% respectively.

Import: husked + milled - till 30/04/2020

(tonnes in milled rice equivalent)

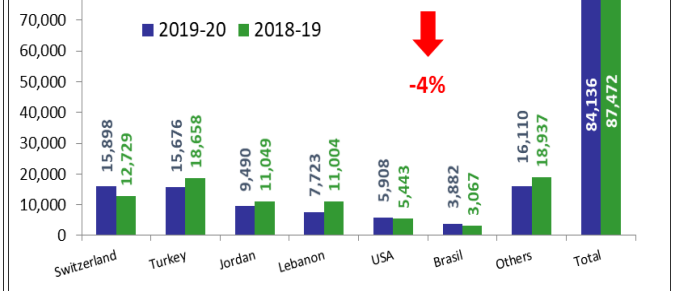
(Source: Misa Agrim Licences)



Export: husked + milled - till 30/04/2020

(tonnes in milled rice equivalent)

(Source: Misa Agrex Licences)



Italian imports till 3/05/2020 - Customs declarations - Source: DG Agri (tonnes in milled rice equivalent)

Campaig	Paddy			Brown rice		Semi-milled / Milled rice			TOTAL		
	Indica	Japonica	Total	Indica	Japonica	Indica	Japonica	Total	Indica	Japonica	TOTAL
2019/2020	3,949	-	3,949	25,684	1,612	32,600	3,592	36,192	62,233	5,204	67,437
2018/2019	13,715	-	13,715	35,499	2,085	40,528	2,898	43,426	89,742	4,983	94,725