



## News

### Committee for Common Organisation of Agricultural Markets of 31 October (Source: Ente Nazionale Risi Note)

In the Committee for Common Organisation of Agricultural Markets of 31 October, the European Commission presented the market situation in which the 2018/2019 marketing year closed with:

- a record figure for EU rice imports amounting to 1,462,550 tonnes, in milled equivalent;
- an EU import record for Japonica rice amounting to 210,516 tonnes, in milled equivalent, (of which 39% from Myanmar, which is the largest supplier for this type of rice), up 50% on the previous marketing year;
- a record of EU imports in small packages (packages up to 5 kg and packages between 5 and 20 kg) of 433,836 tonnes, an overall increase of 40% compared to the previous campaign (+6% for packages up to 5 kg and +50% for packages between 5 and 20 kg);
- Cambodia which remains the leading supplier of rice in packages of between 5 and 20 kg, accounting for 30% of the total.

### Flexextension: the umpteenth chapter in the never-ending story of Brexit (Source: www.flashplaza.it)

When will the United Kingdom actually leave the European Union? That is what many people are asking themselves. Between referendums, postponements and lack of agreement, the never-ending story has a new chapter on appeal: flexextension.

On 19 October the House of Common approved (322 votes in favour, 306 against) an amendment suspending the vote on the Withdrawal Agreement and on the Political Declaration negotiated between the EU and the United Kingdom, until the Withdrawal bill, that is the law aimed at making the agreement on the withdrawal operational in the United Kingdom's legal system, has been adopted.

Consequently, the UK Government was required to submit a request to the EU for a further extension of the deadline under Article 50 TEU, compared to the deadline of 31 October 2019.

Also on 19 October, the Prime Minister of the United Kingdom, Boris Johnson, sent the President of the European Council, Donald Tusk, a letter (not signed by him) requesting a further extension of the deadline under Article 50 TEU until 31 January 2020.

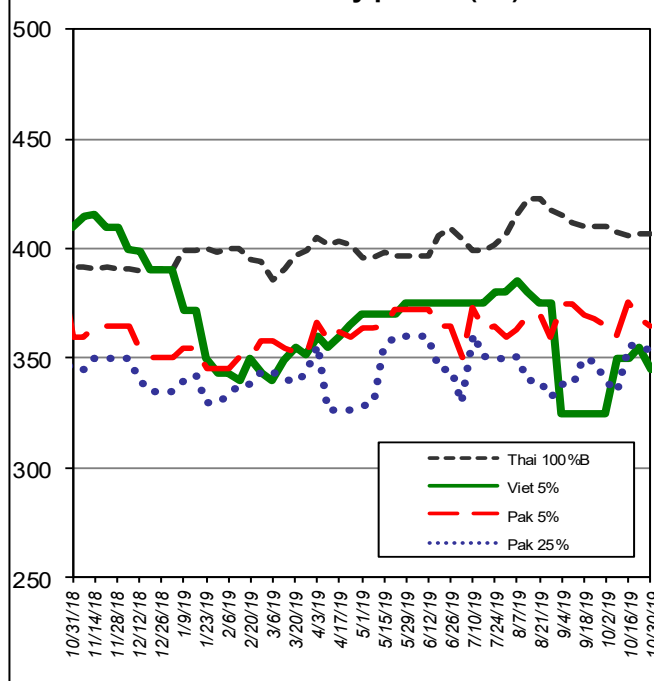
## International Markets

### Milled rice international FOB quotes

Exchange rate 1 € = 1.1106

Asian Markets	\$/t	€/t
Thai 100%B	407	366
Vietnam 5%	345	311
India 5%	360	324
Pakistan 5%	365	329
Pakistan 25%	353	318
Cambodia 5%	440	496
Myanmar 5%	355	320
India Basmati trad.	N.A.	N.A.
Other Markets	\$/t	€/t
Uruguay 5%	528	475
Argentina 5%	475	428
Paraguay 5%	465	419
USA LG 2/5% sacked	560	504
California MG 1/4% Med	810	729

### Weekly prices (\$/t)



## Food Safety

### Rapid Alert System (Source: EFSA)

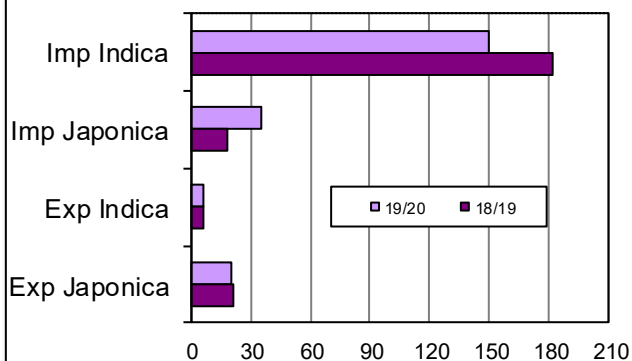
An alert notification was sent by Sweden concerning too high intake of monacolin K (recommended intake: 10 mg/day) from red rice food supplement from Denmark.

A border rejection notification was sent by Portugal concerning aflatoxins (B1 = 19 µg/kg - ppb) in rice from Myanmar.

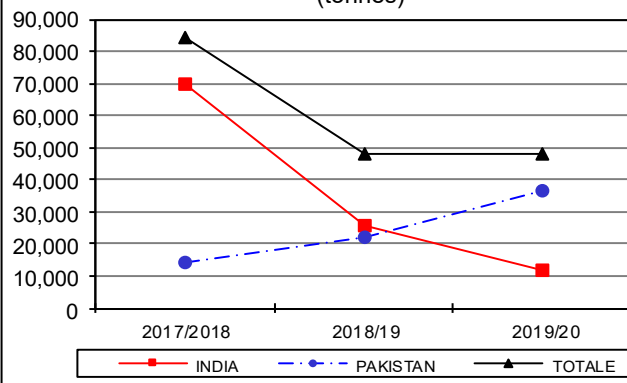
Two border rejection notifications were sent by United Kingdom concerning unauthorised genetically modified (35S promoter, Cry1Ab/Ac gene, Cry1Ab-gene SYBR@Green, NOS terminator) and unauthorised genetically modified (35S promoter, Cry1Ab/Ac gene, SYBR@Green, NOS terminator) rice noodles from China.

# European Market

Import Export EU ('000 tonnes milled rice equivalent)



Basmati husked rice imports (tonnes)



## In focus

EU imports amount to 185,447 tonnes, in milled equivalent, 15,400 tonnes (-8%) less than last year (the lowest level in the last four campaigns). This contraction is due to the lower semi-milled and milled Indica rice imports, from last year's 101,471 tonnes to the current 69,127 tonnes (-32,344 tonnes, -32%). Brown rice Basmati imports, amounting to 52,659 tonnes, decreased by about 2.000 tonnes (-4%) compared to last campaign.

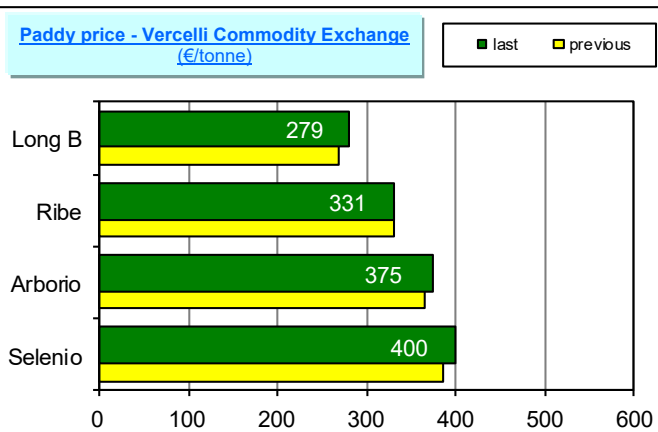
EU exports amounts to 31,084 tonnes, in milled equivalent, 475 tonnes (+2%) more than last year.

# Italian Market

Paddy transfers

TYPE OF RICE	CAMPAIGN	
	2019/20 tonnes	2018/19 tonnes
ROUND	64,297	95,181
MEDIUM	9,214	11,157
LONG A	120,284	120,072
LONG B	86,391	88,877
<b>TOTAL</b>	<b>280,186</b>	<b>315,287</b>

Paddy price - Vercelli Commodity Exchange (€/tonne)



## In focus

In the last week paddy rice transfers by farmers reached 40,287 tonnes: 18,578 tonnes of long A grain, 12,647 tonnes of round grain, 7,912 tonnes of long B grain and 1,150 tonnes of medium grain. The total transfers decreased by 35,101 tonnes (-11%) compared to last campaign: round grain, long B grain and medium decreased, whereas long A grain, amounting to 120,284 tonnes, are in line with last year's transfers.

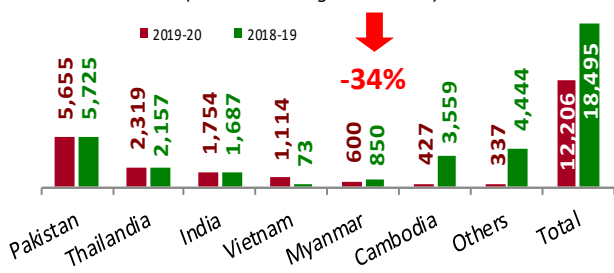
At Commodity Exchange in Vercelli, the paddy prices increased for Selenio (+€15), Arborio (+€10) and long B (+€10).

Italian imports amount to 12,206 tonnes, in milled equivalent, of which 9,896 tonnes are Indica. Compared to last campaign, imports decreased by 6,289 tonnes (-34%), mainly due to lower imports from Cambodia (-3,131 t), Guyana (-2,920 t) and Paraguay (-1,035 t). According to customs declarations imports amount to 11,797 tonnes decreased by 2,300 tonnes (-17%) (see table at the bottom).

With export licences issued for 2,050 tonnes in the last week, Italian exports amount to 13,873 tonnes, in milled equivalent, -5% less than last year when amounted to 14,604 tonnes.

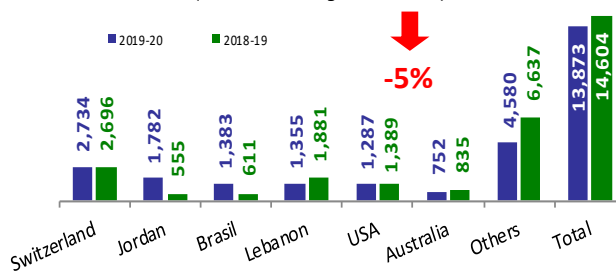
Import: husked + milled - till 25/10/2019

(tonnes in milled rice equivalent)  
(Source: Mise Agrim Licences)



Export: husked + milled - till 25/10/2019

(tonnes in milled rice equivalent)  
(Source: Mise Agrex Licences)



Italian imports till 27/10/2019 - Customs declarations - Source: DG Agri (tonnes in milled rice equivalent)

Campaing	Paddy			Brown rice			Semi-milled / Milled rice			TOTAL		
	Indica	Japonica	Total	Indica	Japonica	Total	Indica	Japonica	Total	Indica	Japonica	TOTAL
2019/2020	-	-	-	4,842	1,481	6,323	4,780	694	5,474	9,622	2,175	11,797
2018/2019	-	-	-	3,295	180	3,475	10,366	290	10,656	13,661	470	14,131