



News

Carrà: rice sector victorious (Source: Ente Risi Note)

Compactness was decisive in getting the safeguard clause.

"Once again, the national rice sector, with the indispensable activity of the Mipaaf and Mise, has shown that compactness and authority which on other occasions have enabled it to be a winner in Brussels". In this way, the president of Ente Nazionale Risi, Paolo Carrà, commented the formal decision by the Commission to reintroduce the duties on milled rice from Cambodia and Myanmar, for 3 years. Carrà added: "The Commission, with this unexpected and many thought impossible decision gives us the opportunity to recover market share of Indica rice. I thank the Minister Centinaio, who in recent months has concretely demonstrated his closeness to the sector, and the Ente Nazionale Risi offices, which have supported the demands of the sector with the necessary technical information on market organization". The Regulation (EU) 2019/67 is available [at this link](#).

Turkey purchased 40,000 tonnes of rice (Source: <https://livericeindex.com>)

The Turkish Grain Board purchased a total of 4,000 MTS of milled rice and 36,000 MTS of paddy in tenders which were held on 25 December. The shipment of the quantities awarded is required between 3 January - 15 February 2019.

Egypt's GASC seeks white rice (Source: <https://www.zawya.com>)

Egypt's state grain buyer, the General Authority for Supply Commodities (GASC) seeks cargoes of at least 20,000 tonnes of white rice (10-12% broken parts) in an international purchasing tender for arrival 20 March - 20 April and/or 1 - 30 April. The deadline for offers is 27 January. Each bidder should present samples alongside their offer to be tested by the Ministry of Agriculture.

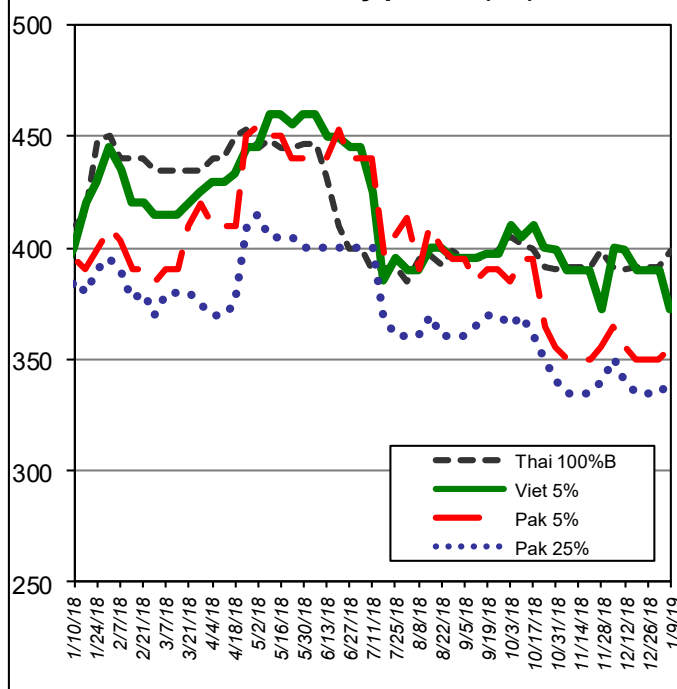
International Markets

Milled rice international FOB quotes

Exchange rate 1 € = 1.1440

Asian Markets	\$/t	€/t
Thai 100%B	399	349
Vietnam 5%	372	325
India 5%	385	337
Pakistan 5%	355	310
Pakistan 25%	340	297
Cambodia 5%	492	430
Myanmar 5%	375	328
India Basmati trad.	1,450	1,267
Other Markets	\$/t	€/t
Uruguay 5%	520	455
Argentina 5%	505	441
Paraguay 5%	500	437
USA LG 2/5% sacked	550	481
California MG 1/4% Med	900	787

Weekly prices (\$/t)



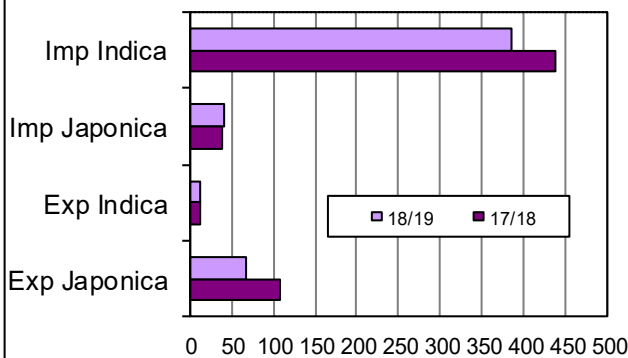
Food Safety

Rapid Alert System (Source: EFSA)

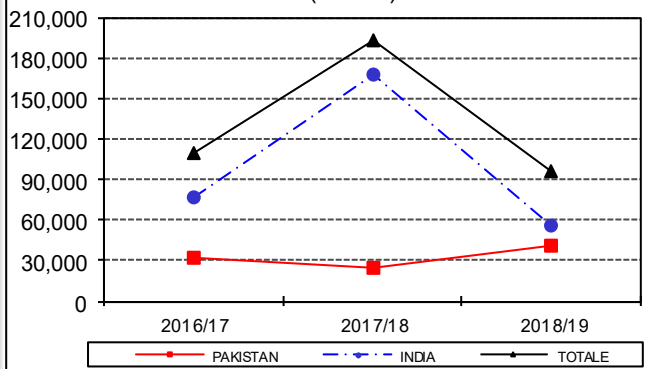
No alert concerning rice.

European Market

Import Export EU ('000 tonnes milled rice equivalent)



Basmati husked rice imports (tonnes)

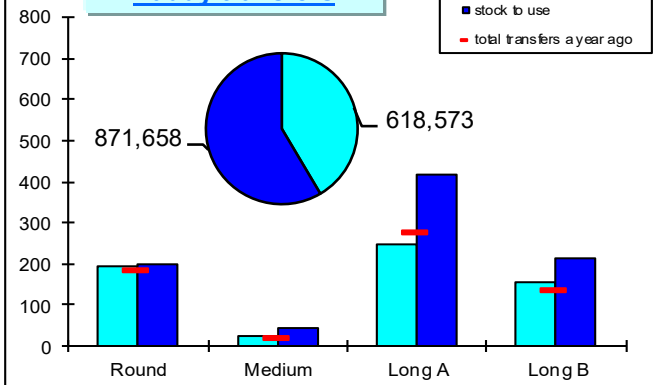


In focus

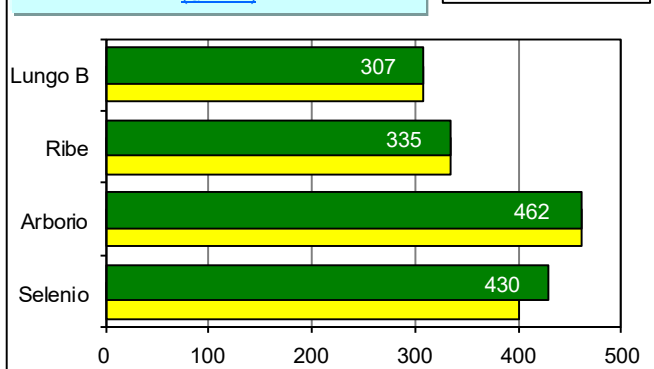
EU imports amount to 426,878 tonnes, in milled equivalent, about 51,300 tonnes (-11%) less than last year. Brown rice Japonica imports increased by 4,000 tonnes, from 2,298 tonnes under the campaign 2017/2018 to the current 6,242 tonnes. Brown rice Basmati imports decreased by 96,600 tonnes (-58%), due to lower imports of Basmati rice from India. EU exports amount to 79,079 tonnes, in milled equivalent, 41,000 tonnes (-34%) less than last year.

Italian Market

Paddy transfers



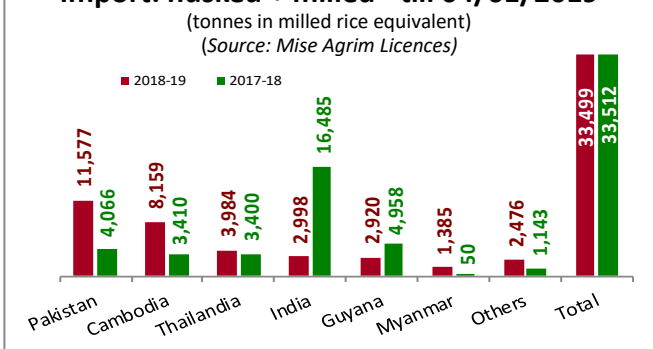
Paddy price - Vercelli Commodity Exchange (€/tonne)



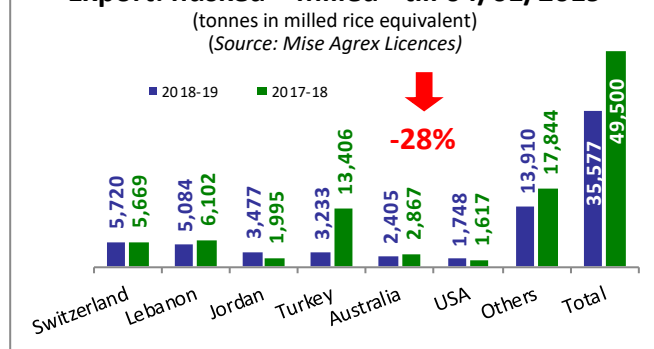
In focus

In the last week paddy transfers by farmers reached 19,338 tonnes: 8,108 tonnes of long A grain, 8,021 tonnes of round grain, 2,880 tonnes of long B grain and 329 tonnes of medium grain. The total transfers amount to 618,573 tonnes, 1.000 tonnes less than last campaign, and account for 41.5% of the total supply. At Commodity Exchange in Vercelli, the paddy prices increased for Selenio (+€ 30). According to Agrim licences, Italian imports amount to 33,499 tonnes, in milled equivalent, as last year, but according to customs declarations (see table at bottom) imports increased by 3,516 tonnes (+10%) due to higher imports of paddy. Italian exports, amounting to 35,577 tonnes, in milled equivalent, decreased by 13,923 tonnes (-28%) compared to last year. The greatest decrease is recorded for exports to Turkey (-10,173 t, -76%).

Import: husked + milled - till 04/01/2019



Export: husked + milled - till 04/01/2019



Italian imports till 06/01/2019 - Customs declarations - Source: DG Agri (tonnes in milled rice equivalent)

Campaing	Paddy			Brown rice			Semi-milled / Milled rice			TOTAL		
	Indica	Japonica	Total	Indica	Japonica	Total	Indica	Japonica	Total	Indica	Japonica	TOTAL
2018/2019	5,832	-	5,832	9,417	222	9,639	21,019	748	21,767	36,268	970	37,238
2017/2018	1,539	-	1,539	16,496	25	16,521	14,904	758	15,662	32,939	783	33,722