



News

EC upholds Italy rice appeal agst Myanmar-Cambodia (Source: <http://www.ansa.it>)

The European Commission on Tuesday upheld an appeal from Italian rice producers saying they had been damaged by zero-tariff imports from Myanmar and Cambodia. Tariffs may soon be reintroduced against these two countries, it said.

An EC probe into the matter began in March.

The C will now propose to the EU-28 a vote on restoring tariffs on the two Asian countries.

News on rice markets (Source: <https://livericeindex.com>)

AMIS (The Agricultural Market Information System) has forecast 2018/19 global milled rice production at 513 million MTS, a 1.32% increase from 2017/18 as improved output in the U.S. and India offsets reduced output in Mali, Pakistan and the Philippines. Global trade is forecast at 47.7 million MTS (milled equivalent, -1.45%) and stocks are expected to increase to 176.5 million MTS (milled equivalent, +2.62%).

For **Thailand**, the USDA has forecast Thai 2019 milled rice production at 20.9 million MTS, up by 2.41% year-on-year as an anticipated expansion in harvested area to 11 million hectares (+3.05%) is expected to offset crop damage caused by floods and drought. According to the Thai Rice Exporters Association, milled rice exports between January – September 2018 totalled 8.12 million MTS, down by 1.8% year-on-year.

In **Vietnam** milled rice exports totalled 5.24 million MTS between January - October 2018, up by 3.4% year-on-year.

In **Myanmar**, the Myanmar Rice Federation and the Union of Myanmar Federation of Chambers of Commerce and Industry have requested for the E.U. Commission not to remove the country's preferential access to the E.U. market through the Everything But Arms (EBA) initiative. The organisations stated that the removal of Myanmar's EBA status would severely affect the competitiveness of exports and limit foreign investment. An emergency E.U. mission to Myanmar began investigating alleged human rights violations against the Rohingyas.

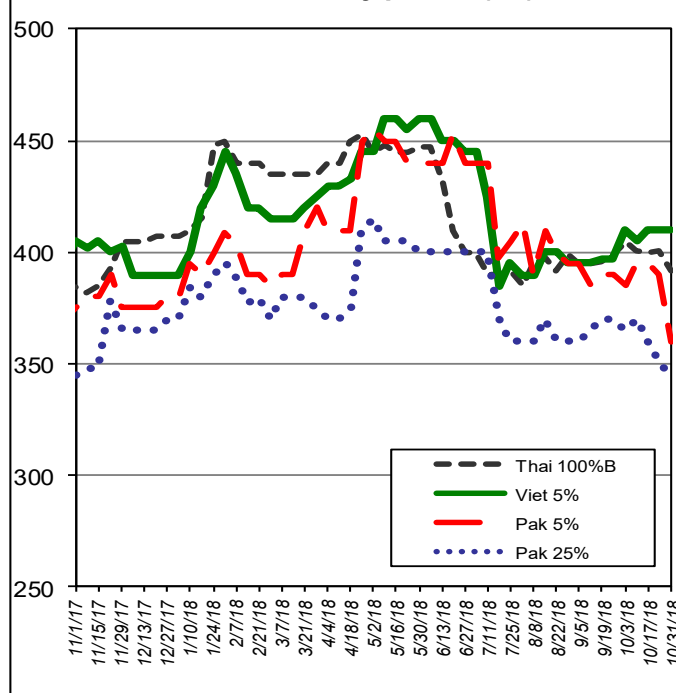
International Markets

Milled rice international FOB quotes

Exchange rate 1 € = 1.1372

Asian Markets	\$/t	€/t
Thai 100%B	392	345
Vietnam 5%	410	361
India 5%	365	321
Pakistan 5%	360	317
Pakistan 25%	345	303
Cambodia 5%	485	426
Myanmar 5%	390	343
India Basmati trad.	1,600	1,407
Other Markets	\$/t	€/t
Uruguay 5%	520	457
Argentina 5%	505	444
Paraguay 5%	500	440
USA LG 2/5% sacked	550	484
California MG 1/4% Med	820	721

Weekly prices (\$/t)



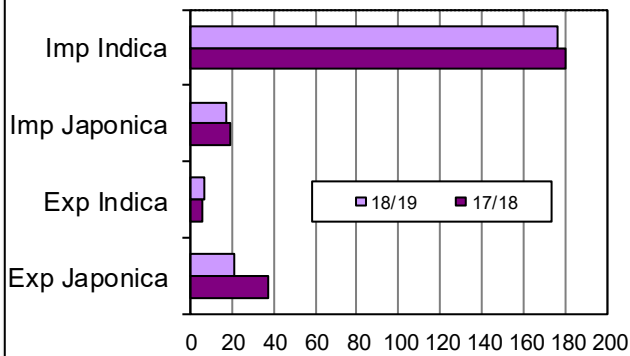
Food Safety

Rapid Alert System (Source: EFSA)

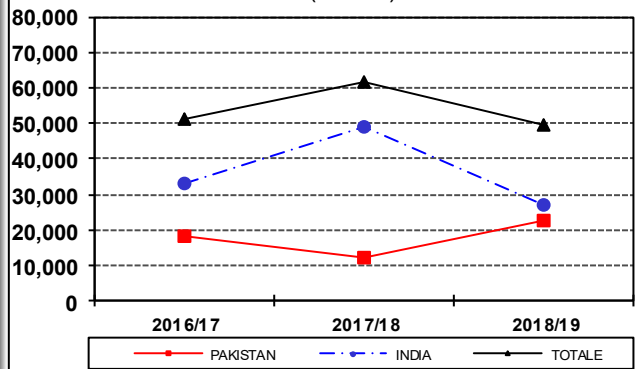
A border rejection notification was sent by United Kingdom concerning thiamethoxam (0.024 mg/kg - ppm) and unauthorised substances carbendazim (0.034 mg/kg - ppm) and tricyclazole (0.082 mg/kg - ppm) in basmati rice from India.

European Market

Import Export EU (*'000 tonnes milled rice equivalent)



Basmati husked rice imports (tonnes)



In focus

EU imports amount to 194,234 tonnes, in milled equivalent, 3% less than last year. Rice Japonica imports, amounting to 17,700 tonnes, decreased by 5%, while Indica imports, amounting to 176,500 tonnes, decreased by 2%. Since the Commission did not publish the data concerning Basmati imports and EU exports, the relative graphs are updated to last week.

Italian Market

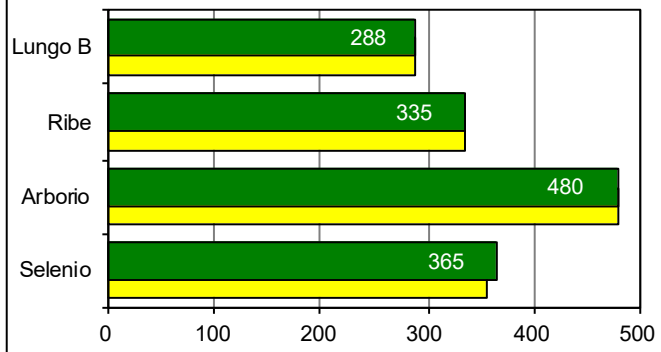
Paddy transfers

CAMPAIGN

TYPE OF RICE	2018/19 tonnes	2017/18 tonnes
ROUND	95,181	96,658
MEDIUM	11,157	9,339
LONG A	120,072	157,008
LONG B	88,877	81,334
TOTAL	315,287	344,339

Paddy price - Vercelli Commodity Exchange (€/tonne)

■ last ■ previous



In focus

In the last week paddy transfers by farmers reached 36,451 tonnes: 15,047 tonnes of long A grain, 12,579 tonnes of round grain, 7,707 tonnes of long B grain and 1,118 tonnes of medium grain. The total transfers decreased by 29,000 tonnes (-8%) compared to last campaign. Long B and medium grain increased by 7,543 and 1,818 tonnes, whereas long A and round grain decreased by 36,936 and 1,477 tonnes respectively.

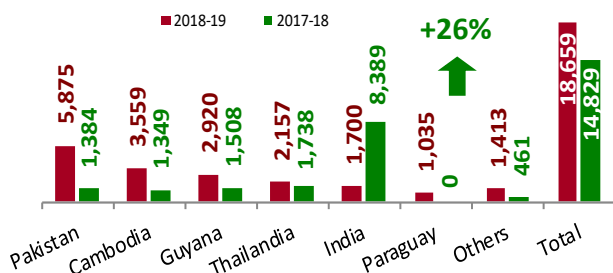
At Commodity Exchange in Vercelli, the paddy prices increased for Selenio (+€ 10).

According to Agrim licences, Italian imports amount to 18,659 tonnes, in milled equivalent, 3,830 tonnes (+26%), more than last year, but according to customs declarations imports decreased by 21% (see table at bottom).

Italian exports amount to 14,821 tonnes, in milled equivalent, 6,937 tonnes (-32%) less than last year, in the last week, in particular, 2,481 tonnes, in milled equivalent, were exported, whose 700 tonnes to Libano.

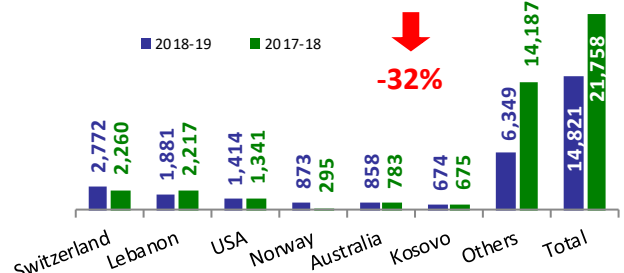
Import: husked + milled - till 26/10/2018

(tonnes in milled rice equivalent)
(Source: Mise Agrim Licences)



Export: husked + milled - till 26/10/2018

(tonnes in milled rice equivalent)
(Source: Mise Agrex Licences)



Italian imports till 28/10/2018 - Customs declarations - Source: DG Agri (tonnes in milled rice equivalent)

Campaig	Paddy			Brown rice			Semi-milled / Milled rice			TOTAL		
	Indica	Japonica	Total	Indica	Japonica	Total	Indica	Japonica	Total	Indica	Japonica	TOTAL
2018/2019	-	-	-	3,295	180	3,475	10,154	290	10,444	13,449	470	13,919
2017/2018	1,539	-	1,539	8,748	-	8,748	7,129	286	7,415	17,416	286	17,702