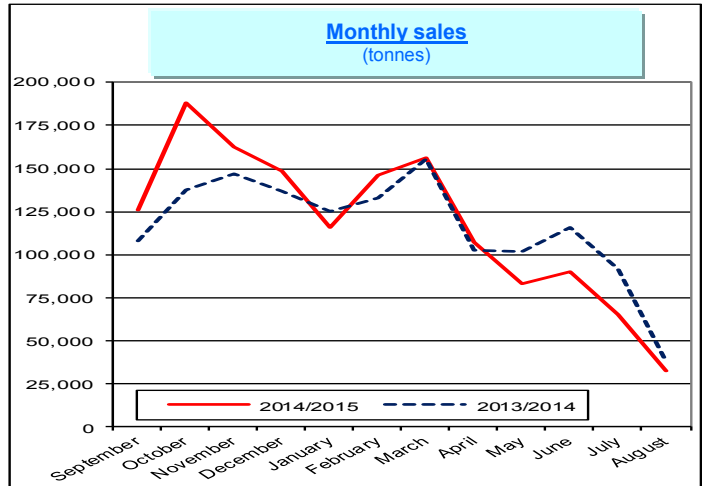
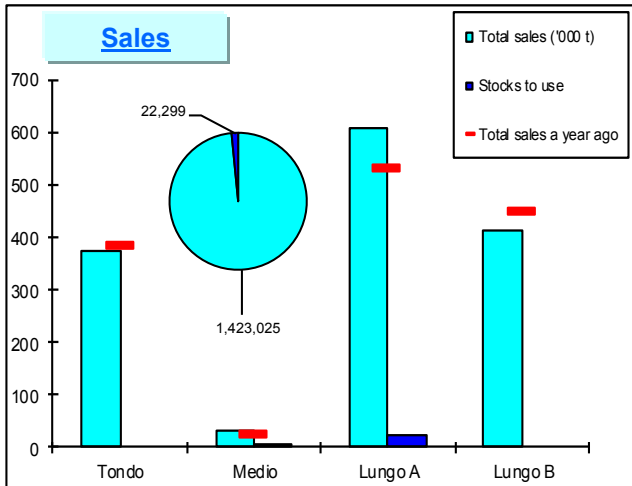




Italian Market



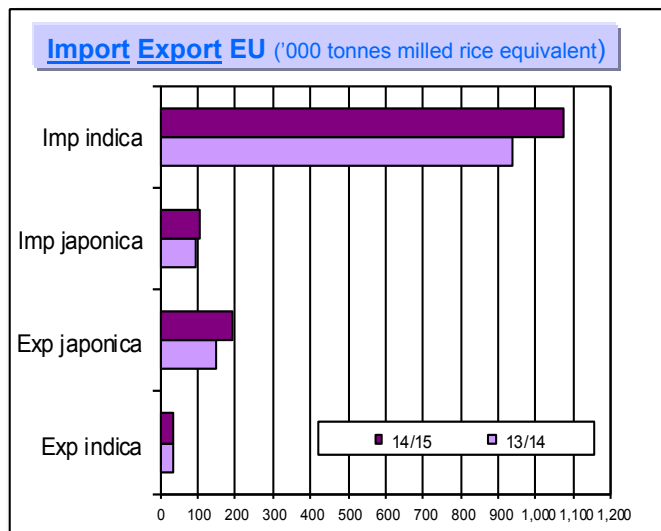
In focus

Over the last nine weeks, paddy sales by farmers reached 98,167 tonnes: 43,890 tonnes of long A grain, 34,838 tonnes of long B grain, 17,206 tonnes of round grain and 2,233 tonnes of medium grain.

Total sales increased of 24,431 tonnes (+1.7%) compared to one year ago: +76,234 tonnes of medium and long A grain, -40,409 tonnes of long B grain e -11,394 tonnes of round grain.

Waiting the quotations of the new campaign, the graph on the right shows a comparison between the monthly sales of the last two campaigns: the 2014/2015 sales are higher than the previous year up to April (except January) but from May, the situation reverses, partly owing to the reduced availability of product of the campaign 2014/2015.

European Market



Reg. EC n. 1273/11 - Quantities to be allocated for the September 2015 subperiod

Order number	Origin	Type of rice	Tonnes
09.4127	U.S.A.	semi-milled and wholly milled	12,388.232
09.4128	THAILAND	semi-milled and wholly milled	1,098.795
09.4129	AUSTRALIA	semi-milled and wholly milled	351.800
09.4112	THAILAND	semi-milled and wholly milled	79.899
09.4116	U.S.A.	semi-milled and wholly milled	1,392.122
09.4117	INDIA	semi-milled and wholly milled	11.441
09.4118	PAKISTAN	semi-milled and wholly milled	8.628
09.4119	OTHER ORIGINS	semi-milled and wholly milled	33.885
09.4168	ALL COUNTRIES	broken rice	31,788.000

In focus

The EU imports, amounting to 1,181,610 tonnes in milled rice equivalent, overcome both the previous year level (1,028,000 tonnes) and the 2007/2008 historical record (1.065.000 tonnes). Import are higher both for semi milled (+13%) and milled rice (+16%). Milled rice amounts to about 697,000 tonnes, that is 92,000 tonnes above the previous year record level (605,000 tonnes).

The EU exports increased of 22% compared to one year ago, amounting to 227,666 tonnes in milled rice equivalent.

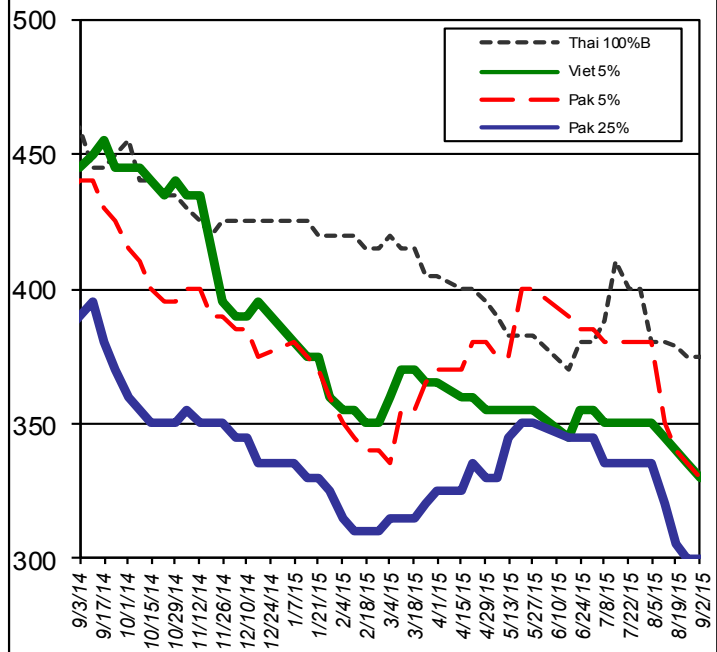
International Markets

Milled rice international FOB quotes

Exchange rate 1 € = 1.1236 \$

Asian Markets	\$/t	€/t
Thai 100%B	375	334
Vietnam 5%	330	294
India 5%	370	329
Pakistan 5%	330	294
Pakistan 25%	300	267
Cambodia 5%	423	376
India Basmati traditional	1,400	1,246
Other Markets	\$/t	€/t
Uruguay 5%	540	481
Argentina 5%	535	476
Brazil 5%	500	445
USA LG 2/4%	565	503
California MG 1/4% Med	835	743
Egypt Medium Grain 2/5%	845	752
Egypt Round Grain 2/5%	800	712

Weekly prices (\$/t)



World

In **Mozambique** the Minister of Agriculture and Food Security is considering plans to impose duty on rice to encourage domestic production. Plans to cut the current rice deficit also include investments in seed improvement and fertilizers.

In **China** rice imports are predicted to be similar to the 2014 level at 2.7 million MTS milled, although imports from Vietnam are likely to decrease significantly as part of the government's plan to reduce reliance upon Vietnam and increase the import quotas for other origins.

Thailand

The Commerce Ministry has not indicated when it plans to hold its next auction, although the Ministry initially stated sales would be held every month.

Vietnam

Total exports from January to August fell by 13% year-on-year according to Agricultural Ministry, but exports to African destinations increased by 52% in the first seven months of 2015 compared to the same period last year, mainly to Ghana, Ivory Coast and South Africa.

U.S.A.

Growers report concerns that milling yields could be affected by the previous high temperatures across the South and that new crop could produce a higher number of chalky kernels.

South America

Several Countries in South and Central America are suffering from poor weather, possibly as a result of the El Nino phenomenon: the drought could delay rice planting or reduce the planted area. In Colombia, in particular, the National Planning Department announced that the failure to adapt to changing weather conditions will result in economic losses of US \$ 1,1 million per year.

Food Safety

Rapid Alert System (Source: EFSA)

The following border rejection notifications were sent:

- by Cyprus concerning unauthorised substance acephate (0.022 mg/kg - ppm) in basmati rice from India
- by Italy concerning chlorpyrifos (0.11 mg/kg - ppm) in basmati rice from Pakistan
- by Italy concerning triazophos (0.02 mg/kg - ppm) and unauthorised substances carbendazim (0.04 mg/kg - ppm) and hexaconazole (0.03 mg/kg - ppm) in semi-milled rice from India
- by Italy concerning unauthorised substances carbendazim (0.04 mg/kg - ppm) and hexaconazole (0.02 mg/kg - ppm) in semi-milled rice from India
- by Italy concerning unauthorised substance carbendazim (0.03 mg/kg - ppm) in parboiled rice from India.

An information for follow-up notification was sent by Netherlands concerning sushi rice infested with insects rice weevil, *Sitophilus oryzae*, from France.

Other news

Myanmar has suspended rice exports until 15 September (Source: <http://livericeindex.com/>)

Floods caused by monsoon rains have affected over 393,031 ha of paddy fields over central and western Myanmar. Rice stocks lost in the floods have resulted in shortages in the affected areas. To curb the consequent rise in prices and ensure food security, exports have been suspended until 15 September. Rice exports in 2014/2015 reached 1.85 million MTS milled and could fall by 250,000 MTS milled this year. Although there are currently sufficient rice reserves in the Country, the government may consider rice imports if the situation worsens.

Egypt has banned rice exports from 1 September (Source: <http://livericeindex.com/>)

The Egyptian government has issued a ministerial decree that will ban exports of all varieties of rice from 1 September. Broken rice exports will be still permitted but will carry an export tax of EGP 100 PMT (US \$ 12.77 PMT). The export licenses issued in 2014 will still be permitted for use. The government had lifted a similar ban in October last year but exports had been restricted by the requirement to deliver to the government 1 MT of rice for every 1 MT exported and by an export tax of US \$ 280 PMT.