



## Rice industry and trade News



# ***RiceNews***

Year 14°- n. 152  
July 2024  
Editor in chief  
Dr. Roberto Magnaghi



# News

## **CAP aid in agriculture: extension of deadline to July 31, 2024**

*(Source: [www.pmi.it](http://www.pmi.it))*

The deadline for submitting the unified application for CAP aid for agricultural enterprises for the current year is postponed to July 31, 2024. This is provided by a decree of the Ministry of Agriculture.

## **Pac controls, here's how the Ams system works**

*(Source: [agronotizie.com](http://agronotizie.com))*

As of this year, the Ams, Area Monitoring System, which will ensure 100% control of farms, comes into operation.

Paying agencies will use precisely the satellite photos to monitor cultivation activities and decide the eligibility of plots subject to Pac aid applications.

In the past, only a small part of the agricultural area, just 5 percent, was checked to see if indeed what was declared in the single application corresponded to reality.

Using these images, the condition of the fields and pastures was analyzed to verify that what was declared in the single application was correct.

However, this system had two orders of problems: it allowed only a few farms to be checked (just 5 percent of the total), it was expensive, and it allowed images of a precise moment in time (when the satellite passed by) that was not always sufficient to verify the eligibility of individual plots.

To overcome these drawbacks since 2017, the European Commission began to investigate the possibility of using the data collected by Sentinel satellites to support controls related to the CAP.

Over the years, through various projects and pilot tests (in which Agea was also involved), Ams was born, which as of this year comes into full force.

The idea of using Sentinel images to feed into the Pac's control systems offers the great advantage of having data that allows year-round monitoring of agricultural areas, being able to draw on historical data as well, and being able to monitor 100% of the territory.

## **From Brussels another stop to the New Genomic Techniques dossier**

*(Source: [terraevita.edagricole.it](http://terraevita.edagricole.it))*

From Brussels comes another cold shower for NGT. After the act of vandalism that destroyed the experimental field where a rice blast resistant variety had been planted, the Committee of Permanent Representations of States to the European Union, (Coreper), failed to agree on a negotiating mandate on the Commission's proposal on New Genomic Techniques (NGT). But the discussion is only postponed.

# Food Safety

## **Rapid Alert System**

- An information notification for follow-up was sent by Germany concerning GMO in rice noodles from Vietnam.



# **Italian market**

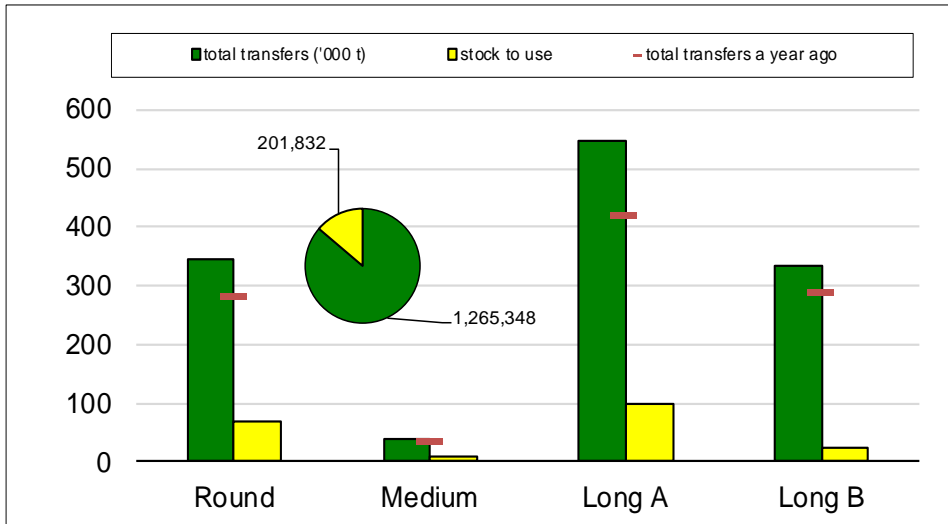
***Campaign 2023/2024***

***From September 1, 2023 to June 25, 2024***



## Paddy rice transfers

(in tonnes)

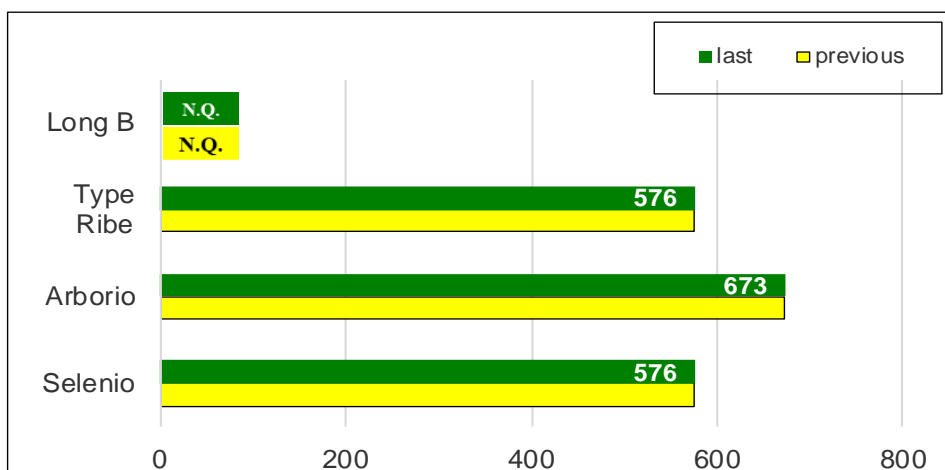


This week's paddy rice transfers involved 9,423 tonnes of "long A," 6,830 tonnes of "round," 4,246 tonnes of "long B," and 1,648 tonnes of "medium."

Since the beginning of the marketing year, 1,265,348 tonnes of paddy rice have been transferred, marking an increase of 232,733 tonnes (+22%) over last year. 201,832 tonnes remain to be placed.

Comparison with the 2021/2022 marketing year shows a decrease of 99,836 tonnes (-7%).

## Paddy prices Vercelli (€/t)



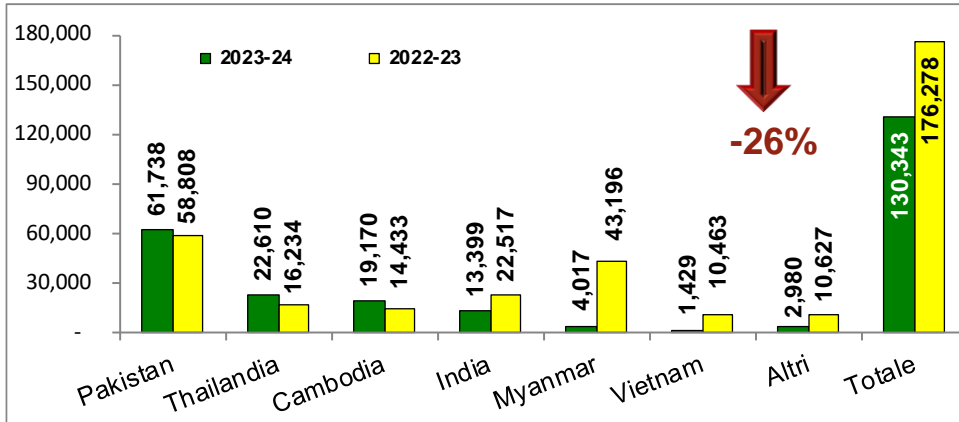
On the Vercelli Commodity Exchange there is no change in reference quotations.



## Import: husked + milled

tonnes in milled rice equivalent

(Source: MAECI Agrim Licences)



For the entire month of June, imports remained down 26% from last marketing year. They currently stand at 130,343 tonnes, in milled equivalent, compared to 176,278 tonnes a year ago, a decrease of 45,935 tonnes.

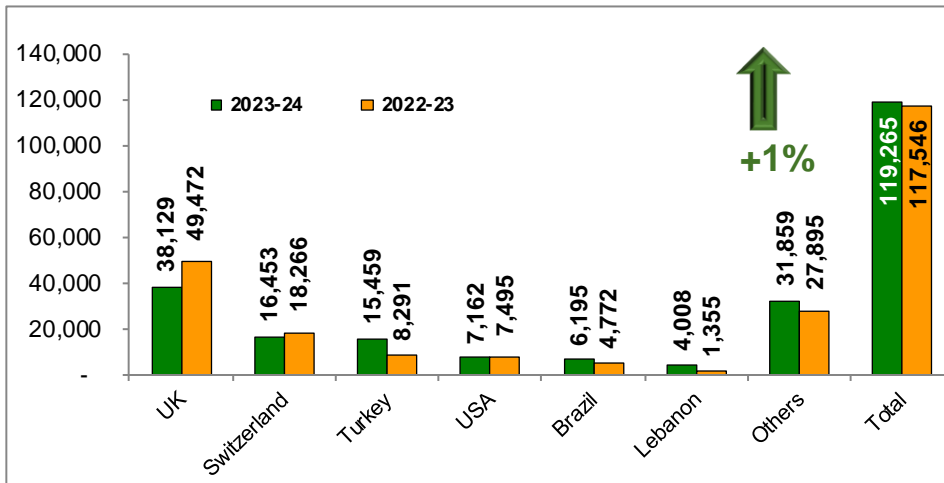
The volumes are broken down as follows: about 70,800 tonnes imported with payment of duty and, at zero duty, nearly 32,500 tonnes of Basmati rice, mainly of Pakistani origin, and about 23,800 tonnes from LDCs.

Another approximately 3,200 tonnes, also duty-free, came from countries under other preferential regimes.

## Export: husked + milled

tonnes in milled rice equivalent

(Source: ENTE RISI Declaration)



Exports are up by 1,719 tonnes (+1%), having increased from 117,546 tonnes a year ago to 119,265 tonnes now, in milled equivalent.

With 15,459 tonnes, Turkey is the country to which Italy has most increased sales (+7,168 tonnes, +86%).

Flows destined for Lebanon-almost tripled-and to countries such as Kosovo and Jordan, which, with 3,794 tonnes and 3,660 tonnes, respectively, show increases of 2,286 tonnes (+152%) and 1,779 tonnes (+95%).



# **European Union market**

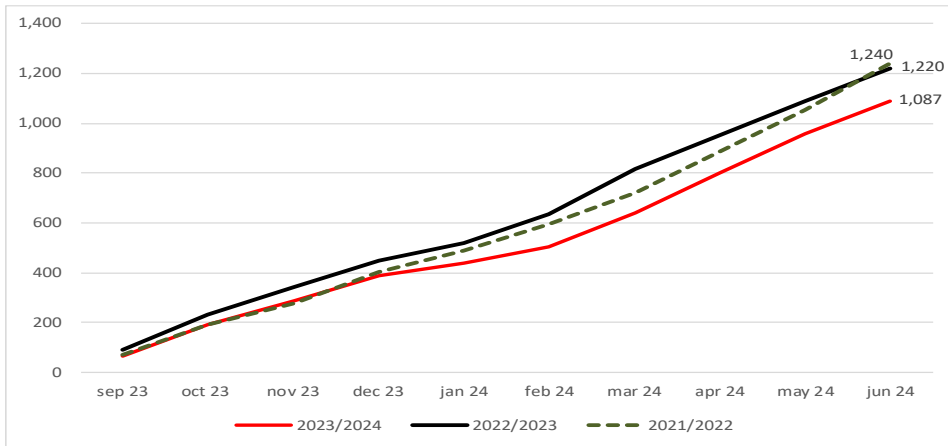
***Campaign 2023/2024***

***from September 1, 2023 to June 22, 2024***



## Import EU

('000 tonnes milled rice equivalent)



A graph of the EU import trend is offered with the latest available data provided by the European Commission updated as of June 22, 2024.

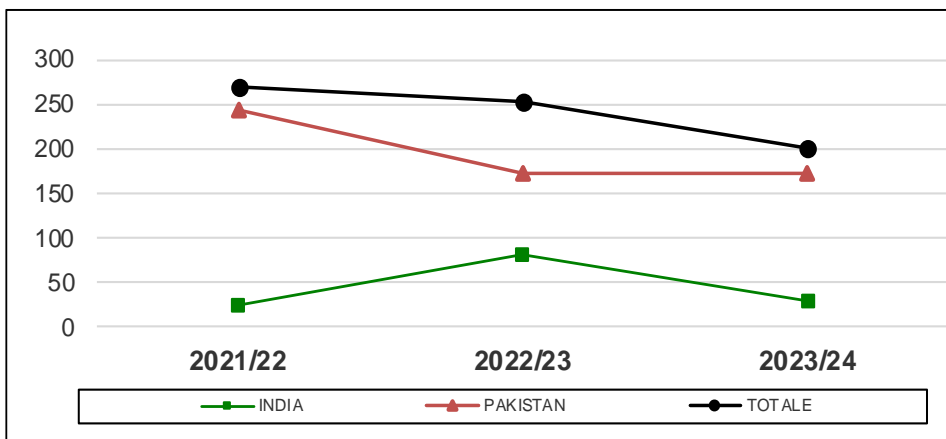
Imports, which stand at nearly 1,087,000 tonnes, in milled equivalent, have been consistently at a lower level than in the previous two marketing years.

The gap between the current campaign and the previous one shows a decrease of nearly 133,000 tonnes (-11%), which is a smaller gap than the peak recorded at the end of March (about -176,000 tonnes; -22%).

Compared with imports two years ago, imports are down by more than 153,000 tonnes (-21%).

## Basmati husked rice imports

('000 tonnes)



Basmati husked rice imports amounted to 201,614 tonnes, of which 172,217 tonnes were of Pakistani origin and 29,396 tonnes were of Indian origin, showing a decrease of 51,761 (-20%) from last year.

Pakistani Basmati rice imports are at the same level as a year ago, while Indian Basmati rice imports show a 64% decrease.



# **International markets**

***Campaign 2023/2024***

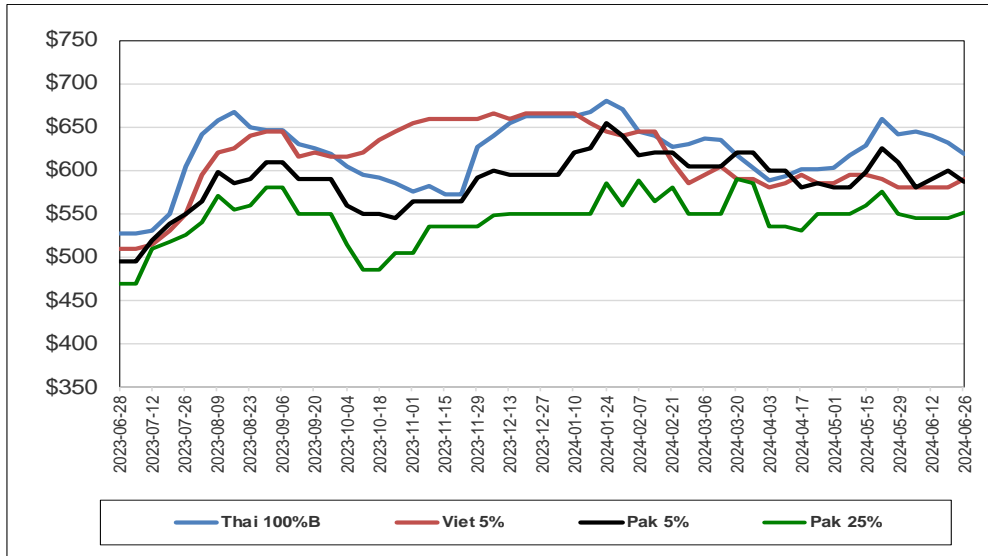
***From September 1, 2023 to June 26, 2024***





## International prices

(\$/tonnes)



## Weekly prices

Milled rice international FOB quotes		
Exchange rate	€1 = \$1.0689	
Asian Markets	\$/t	€/t
Thai 100%B	619	579
Vietnam 5%	590	552
India 5%	export ban	N.A.
Pakistan 5%	587	549
Pakistan 25%	552	516
Myanmar 5%	590	552
Pakistan Basmati S. Kernel	910	851
India Basmati min.exp.price	950	889
Other Markets	\$/t	€/t
Uruguay 5%	800	748
Argentina 5%	830	776
Brazil Type 1	850	795
USA LG 2/4% Fob US Gulf	820	767
California MG 1/4% - Med -	835	781

Source: Creed Rice Co.