



## Rice industry and trade News



Year 14°- n. 149  
April 2024  
Editor in chief  
Dr. Roberto Magnaghi



# News

## **CAP 2024. Here are the rules on certified seeds required for coupled support on rice** (Source: *Ente Risi Note*)

AGEA has published the circular with rules on the single application for 2024.

The circular specifies that in order to obtain coupled support on rice, farmers must have the following information included in their fiscal documents (purchase invoices or transport documents):

- Species
- Variety
- Lot No. (including batch)
- Category
- Quantity

These documents must be attached to the single application. In the absence of any of the above information, farmers will also be required to attach the tags.

Fiscal documentation must not be prior to September of the year preceding the year of application, so certified seed not used in years prior to 2024 has been excluded.

The full circular is available at the following link:

[Agea2137114.3.24aOPR Circolarecoord. Campagna2024 final 13660 6197.pdf \(enterisi.it\)](#)

## **Turkey: reduced duties on rice until Aug. 31** (Source: *Ente Risi Note*)

Turkey normally applies the following ad valorem duties on imported rice: 34% on paddy rice, 36% on husked rice, and 45% on milled rice.

According to a report published by the USDA (U.S. Department of Agriculture), Turkey has reduced them from January 1 until August 31, 2024 to the following levels: 10% on paddy and husked rice, 15% on milled rice. This explains the improvement in Italian exports to Turkey, which, compared to last year's figures, went from a decline of about 650 tons as of Dec. 31, 2023, to an increase of nearly 1,800 tons as of the end of March 2024.

As of September 1, 2024, duties will return to their usual levels.

# Food Safety

## **Rapid Alert System**

- An information notification for attention was sent by Denmark concerning Chlorpyrifos ( $0.017 \pm 0.008$  mg/kg - ppm) in Basmati rice from Pakistan.
- An information notification for attention was sent by Netherland concerning Thiamethoxam (0.047 mg/kg - ppm), Tricyclazolo (0.12 mg/kg - ppm) and Aflatoxin B1 (5.1  $\mu$ g/kg - ppb) in rice from Pakistan.
- A border rejection notification was sent by France concerning Thiamethoxam ( $0.065 \pm 0.03254$  mg/kg - ppm) and Tricyclazolo ( $0.11 \pm 0.055$  mg/kg - ppm) in rice from India.
- A border rejection notification was sent by France concerning Acetamiprid ( $0.014 \pm 0.907$  mg/kg - ppb) in rice from Pakistan.
- A border rejection notification was sent by France concerning Imidacloprid ( $0.019 \pm 0.009$  mg/kg - ppm) in rice from Pakistan.
- A border rejection notification was sent by Ireland concerning Aflatoxin B1 (5.7  $\mu$ g/kg  $\pm$  0.9  $\mu$ g/kg - ppb) and Aflatoxin Total (6.1  $\mu$ g/kg  $\pm$  0.9  $\mu$ g/kg - ppb) in Basmati rice from Pakistan.
- A border rejection notification was sent by Italy concerning Acetamiprid ( $0.041 \pm 0.021$  mg/kg - ppb) in rice from Pakistan.



# **Italian market**

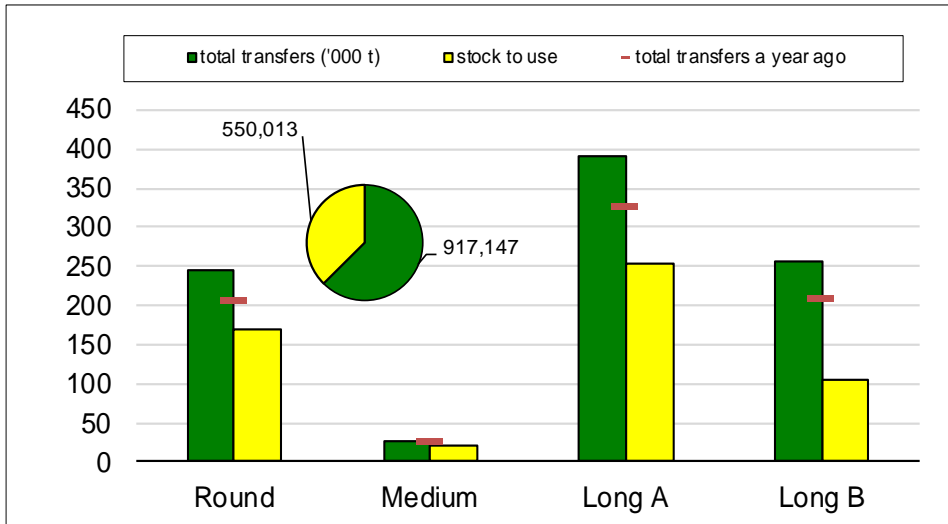
***Campaign 2023/2024***

***From September 1<sup>st</sup>, 2023 to April 2, 2024***



## Paddy rice transfers

(in tonnes)

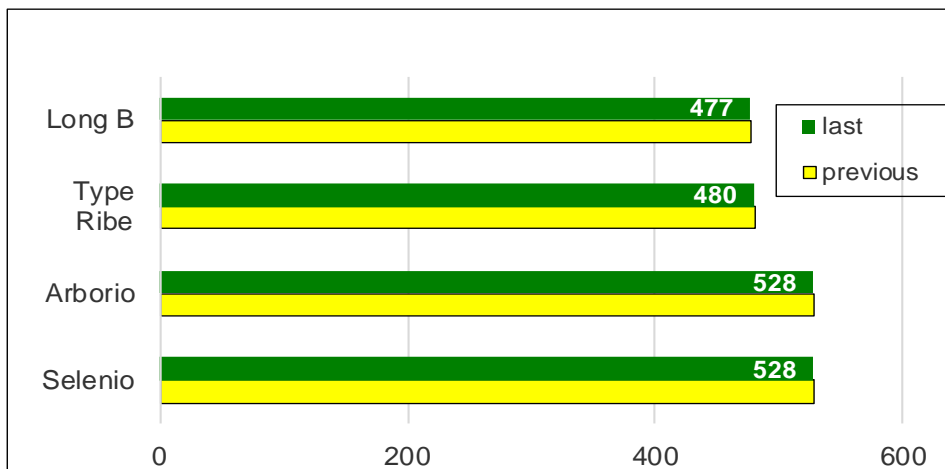


In the last week, paddy rice transfers amounted to 21,489 tonnes broken down as follows: 8,475 tonnes of "long A," 6,614 tonnes of "long B," 5,904 tonnes of "round" and 496 tonnes of "medium."

Total transfers amounted to 917,147 tonnes, placing it at 62.5% of saleable availability and was up 142,709 tonnes (+18.4%) from last marketing year.

Comparison with the 2021/2022 marketing year shows a decrease of 201,429 tonnes (-18%).

## Paddy prices Vercelli (€/t)



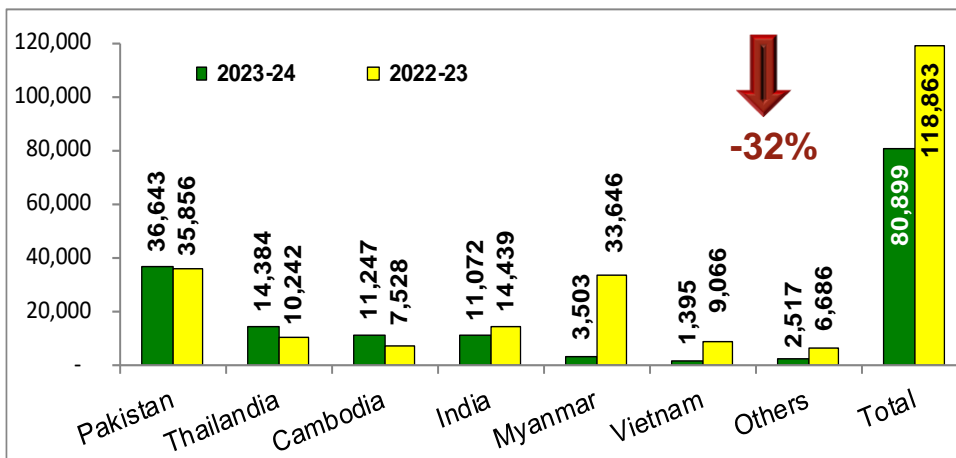
On the Vercelli Commodity Exchange there is no change in reference quotations.



## Import: husked + milled

tonnes in milled rice equivalent

(Source: MAECI Agrim Licences)



Imports stand at 80,899 tonnes, in milled equivalent, compared to 118,863 tonnes last marketing year, and show a decrease of 37,964 tonnes (-32%) compared to last year.

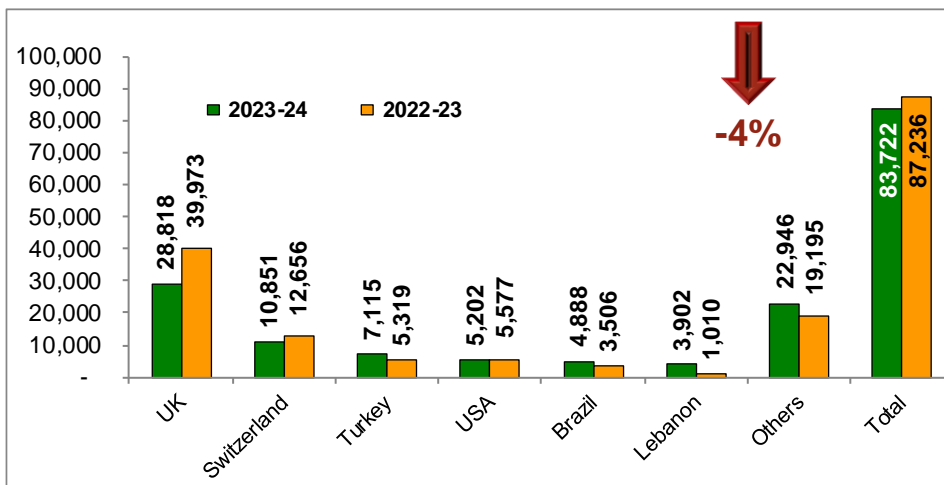
Imports of semi-milled/milled rice, at 59,535 tonnes, account for 74% of the total volume imported, and of these nearly 20,800 tonnes are parboiled milled rice.

Japonica type rice imports of 2,188 tonnes are down 18,761 tonnes (-90%), while Indica type rice imports show a decrease of 19,203 tonnes (-20%) from the same date a year ago.

## Export: husked + milled

tonnes in milled rice equivalent

(Source: ENTE RISI Declaration)



Exports amounted to 83,722 tonnes, in milled equivalent, down 3,514 tonnes (-4%) from the previous marketing year.

The "Long A" type, with a volume of 42,664 tonnes, is the most exported and shows an increase of 6,483 tonnes (+18%) compared to last year. For the export of "round," "medium" and "long B" rice - amounting to 26,996 tonnes, 3,018 tonnes and 11,044 tonnes, respectively - declines of 22%, 34% and 8% are recorded.



# **European Union market**

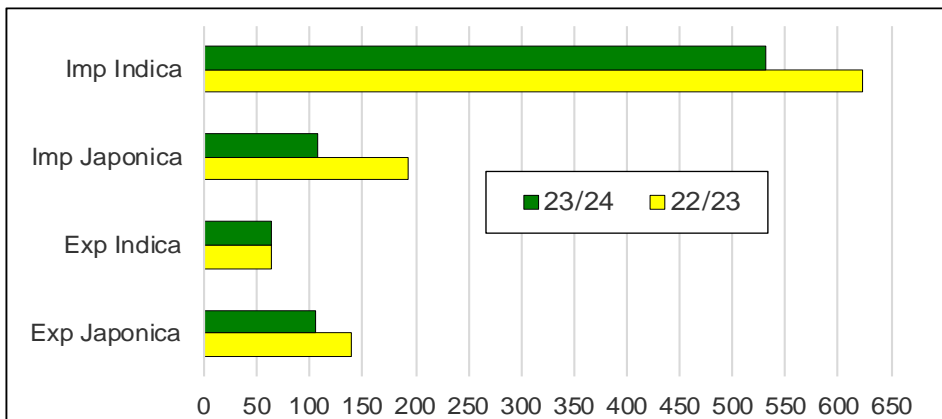
***Campaign 2023/2024***

***from September 1<sup>st</sup>, 2023 to March 27, 2024***



## Import Export EU

(*'000 tonnes milled rice equivalent*)



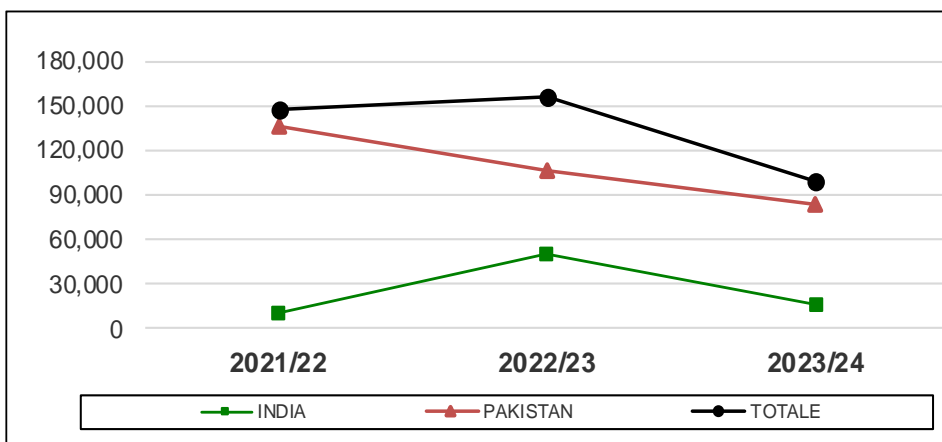
Figures provided by the European Commission, updated as of March 27, show imports down by about 176,200 tonnes (-22%) from last year, having dropped from nearly 815,600 tonnes a year ago to about 639,400 tonnes now.

Japonica type rice imports of 108,200 tonnes show a decrease of about 85,300 tonnes (-44%), while Indica type rice imports of nearly 531,200 tonnes are down by about 90,900 tonnes (-15%).

The total export volume of the campaign amounts to about 169,000 tonnes in milled equivalent, marking a decrease of more than 34,300 tonnes (-17%) from a year ago. Exports of Japonica type rice, about 106,100 tonnes, show a decrease of 33,000 tonnes (-24%), while exports of Indica type rice, about 62,900 tonnes, are down about 1,300 tonnes (-2%).

## Basmati husked rice imports

(*in tonnes*)



Certificate applications for Basmati rice of Pakistani origin amount to 83,313 tonnes and are down 22%, while those for Basmati of Indian origin, at 16,019 tonnes, show a decrease of 68% from last year.



# **International markets**

***Campaign 2023/2024***

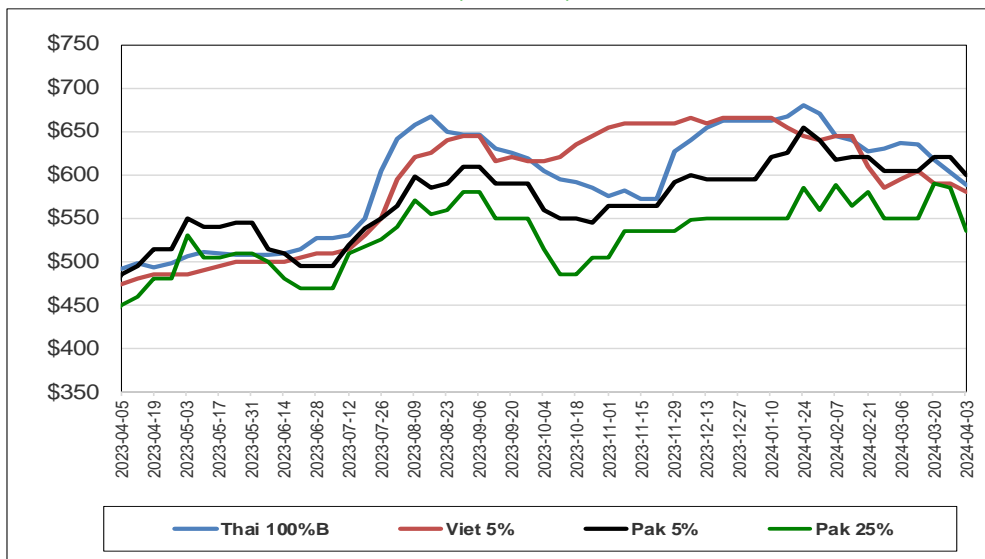
***From September 1, 2023 to April 3, 2024***





## International prices

(\$/tonnes)



## Weekly prices

Milled rice international FOB quotes		
Exchange rate	€1 = \$1.0783	
Asian Markets	\$/t	€/t
Thai 100%B	588	545
Vietnam 5%	580	538
India 5%	divieto export	N.A.
Pakistan 5%	600	556
Pakistan 25%	535	496
Myanmar 5%	635	589
Pakistan Basmati S. Kernel	990	918
India Basmati min.exp.price	950	881
Other Markets	\$/t	€/t
Uruguay 5%	705	654
Argentina 5%	680	631
Brasile Type 1	720	668
USA LG 2/4% Fob US Gulf	820	760
California MG 1/4% - Med -	835	774

Source: Creed Rice Co