



## Rice industry and trade News



# ***RiceNews***

Year 13°- n. 143  
October 2023  
Editor in chief  
Dr. Roberto Magnaghi



# News

## Seed dosage for rice CAP 2024 (Source: MASAF)

Beginning in 2024, coupled support for rice will be paid to rice farmers only if evidence is provided of the use of an adequate quantity of certified seed. The [decree](#) providing the following quantities of certified seed is available on the MASAF website:

| Varieties of rice                            | Kg seed per hectare area |
|--|--------------------------|
| hybrids                                      | 30                       |
| type Clearfield®                             | 160                      |
| type Clearfield® HP                          | 40                       |
| Provisia® 100                                | 100                      |
| All other varieties different from the above | 160                      |

## Gastronomic Exhibition in Madrid (Source: ICE Agency)

The ICE-Agency for the promotion abroad and internationalization of Italian companies is organizing a Gastronomic Exhibition to be held in Madrid, during the Week of Italian Cuisine in the World, dedicated to the food sector for about 20 Italian companies to be held from November 18-20, 2023.

The consumption of Italian products in Spain is going through a phase of clear growth, this is clearly visible from the statistics of trade interchange related to the Agribusiness sector. In the first half of the year 2023, the import of Italian Agribusiness products, increased by 25.47% compared to the same period of the previous year. In all of 2022, the import of Italian food products to Spain, was estimated at 2.046 billion euros.

The initiative aims to spread knowledge and illustrate the properties of the products of excellence of Italian agri-food exports and, consequently, increase Italian sector shares in the Spanish market.

[Click here to view all the information and to join](#)

# Food Safety

## Rapid Alert System

- A border rejection notification was sent by Sweden concerning Chlorpyrifos (0.12 mg/kg – ppm), Thiamethoxam (0.046 mg/kg – ppm) and Tricyclazole (0.055 mg/kg – ppm) in rice from India.
- A border rejection notification was sent by Germany concerning Thiamethoxam (0.081 ± 0.041 mg/kg - ppm), Tricyclazole (0.06 ± 0.03 mg/kg - ppm) and Imidacloprid (0.025 ± 0.013 mg/kg – ppm) in rice from India.
- An information notification for attention was sent by Germany concerning unauthorized genetically modified organisms in rice noodles from Vietnam.



# **Italian market**

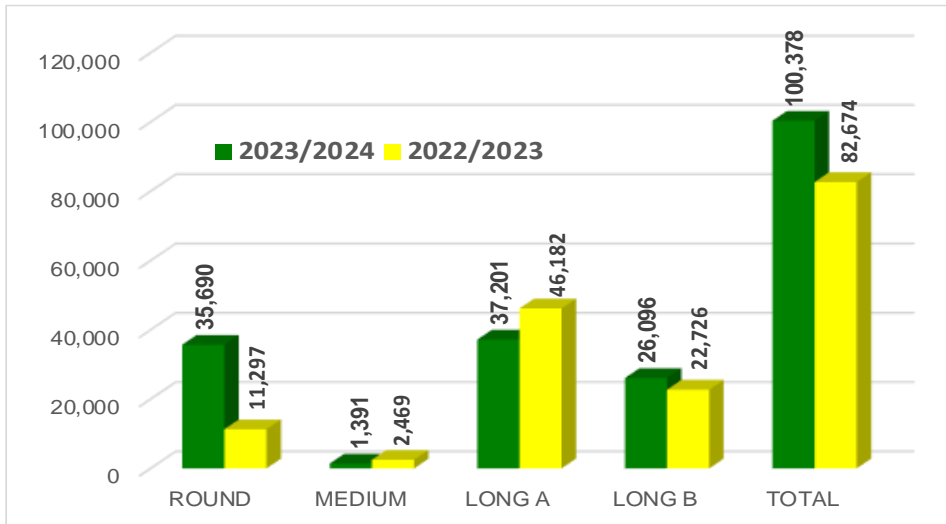
***Campaign 2023/2024***

***From September 1<sup>st</sup>, 2023 to September 26, 2023***



## Paddy rice transfers

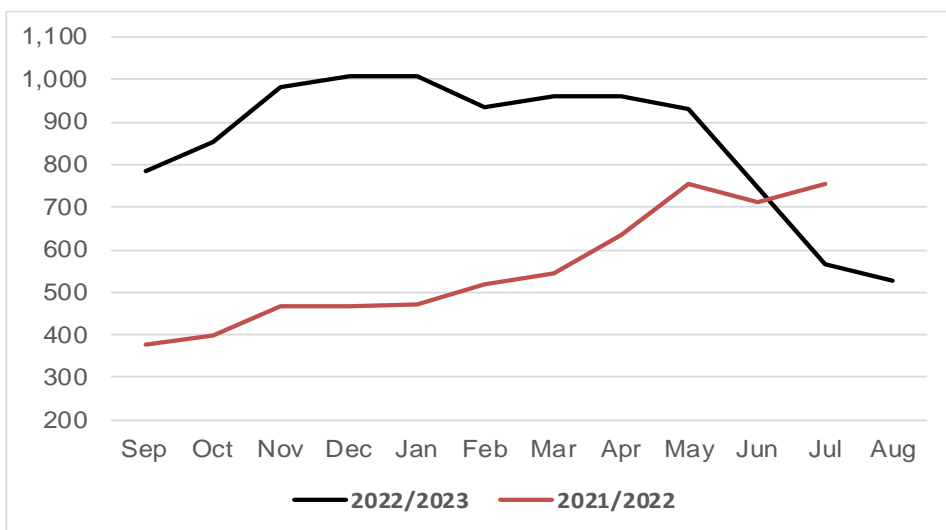
(in tonnes)



This week producers transferred 11,038 tonnes of "long A," 8,537 tonnes of "long B," 6,076 tonnes of "round" and 628 tonnes of "medium," bringing the total this early in the marketing year to 100,378 tonnes. Compared with a year ago, transfers are up by 17,704 tonnes (+21%).

## Paddy prices (€/t)

(Arborio – monthly average)



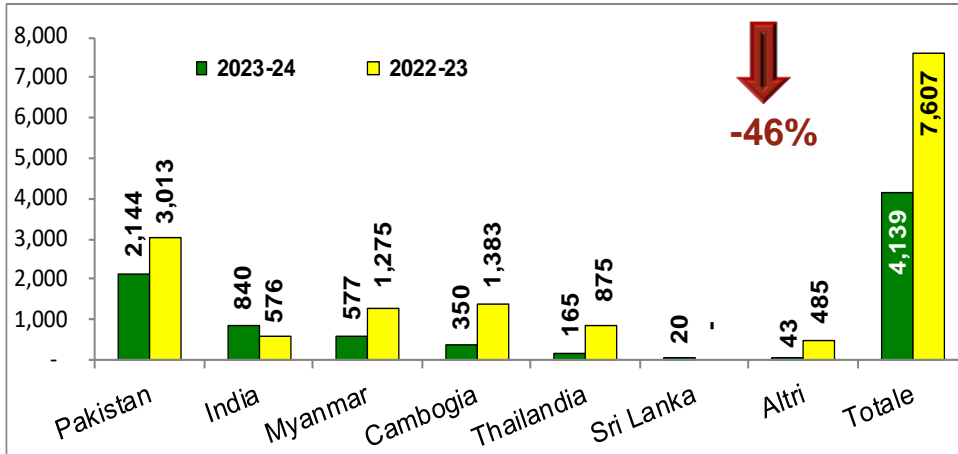
Pending the new quotations, a graphic of the monthly averages for the Arborio variety taken at the Vercelli Commodity Exchange over the last two campaigns is shown.



## Import: husked + milled

tonnes in milled rice equivalent

(Source: MAECI Agrim Licences)



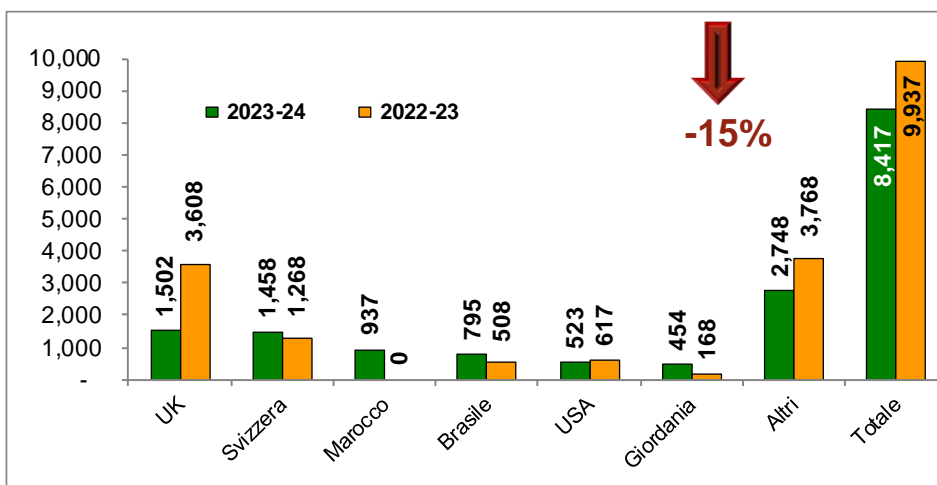
Imports, in milled rice equivalent, totaled 4,139 tonnes, of which 937 tonnes originated from LDCs, down 3,468 tonnes (-46%) from the previous marketing year.

Imports of Indica rice, at 4,093 tonnes, cover 99% of the total volume and are down 1,855 tonnes (-31%) from a year ago.

## Export: husked + milled

tonnes in milled rice equivalent

(Source: ENTE RISI Declaration)



Exports stand at 8,417 tonnes and show a decrease of 1,520 tonnes (-15%) from a year ago. Japonica rice exports amounted to 6,650 tonnes, a decrease of 1,880 tonnes (-22%), while Indica rice exports of 1,767 tonnes marked an increase of 360 tonnes (+26%).



# **European Union market**

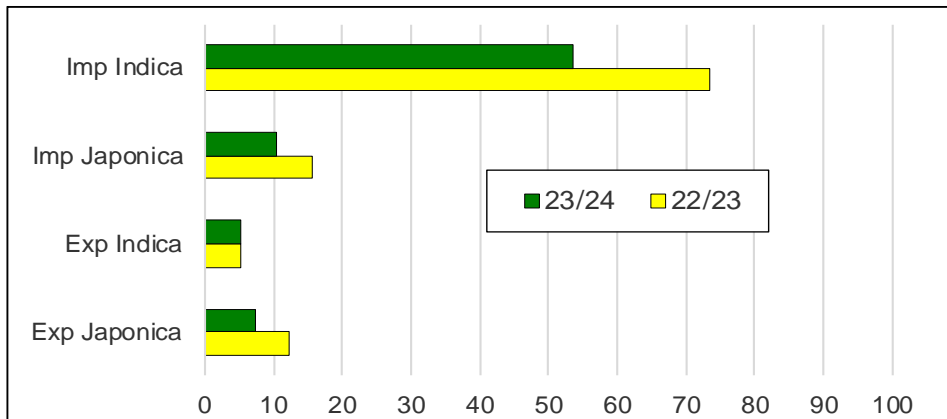
***Campaign 2023/2024***

***from September 1<sup>st</sup>, 2023 to September 23, 2023***



## Import Export EU

(*'000 tonnes milled rice equivalent*)

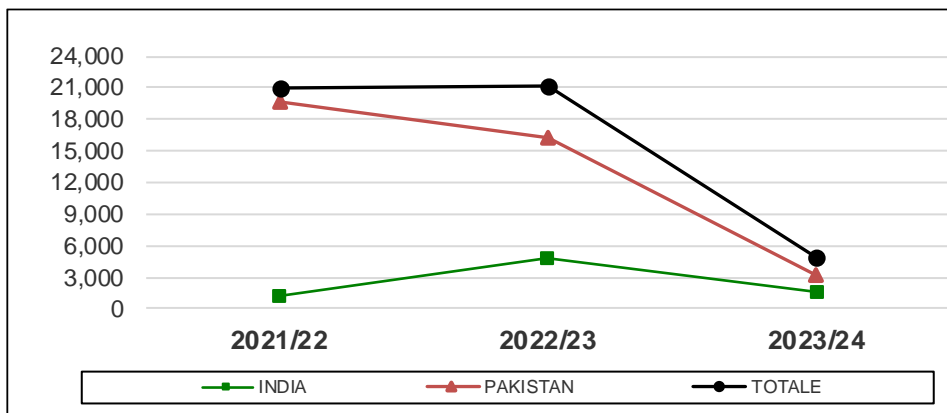


In this first part of the marketing year, imports within the EU are down by more than 25,100 tonnes (-28%) compared to the previous marketing year, having fallen from about 89,100 tonnes a year ago to about 64,000 now. Imports of husked rice, amounting to nearly 15,600 tonnes, show a decrease of 50%; imports of semi-milled/milled rice, amounting to about 48,400 tonnes, show a decrease of 16%.

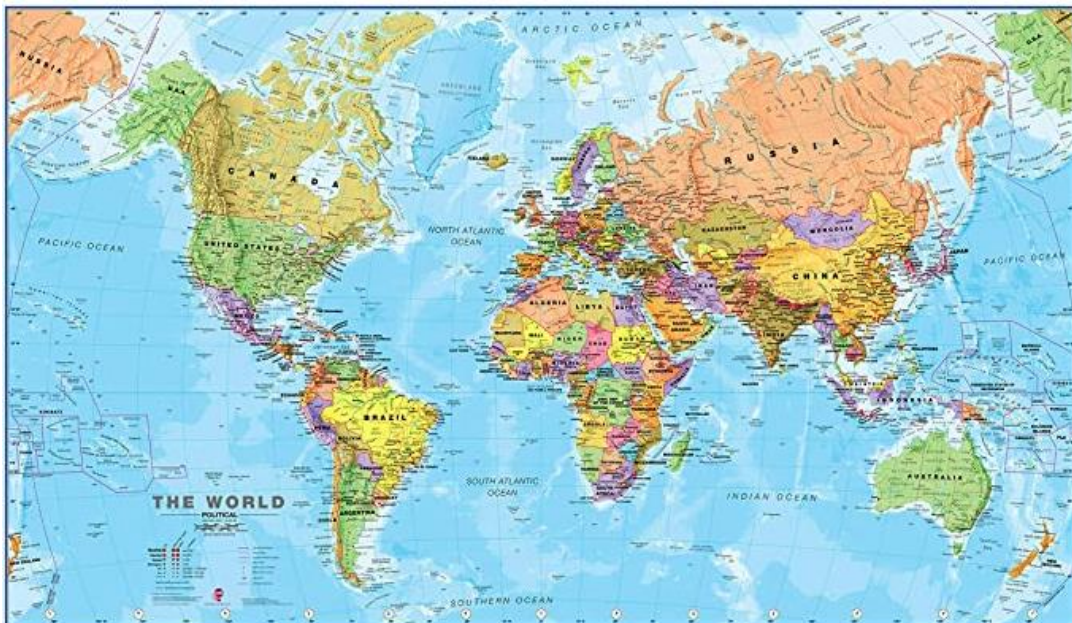
There is also a decline on the export front. The total figure, about 12,500 tonnes, is down about 5,100 tonnes (-29%) from the previous marketing year.

## Basmati husked rice imports

(*in tonnes*)



Import licenses were issued for Basmati husked rice for a quantity of 4,874 tonnes, down 16,214 tonnes (-77%) from a year ago. Quantities originating from India, amounting to 1,592 tonnes, show a decrease of 66%; those from Pakistan, amounting to 3,282 tonnes, show a decrease of 80%.



# **International markets**

***Campaign 2023/2024***

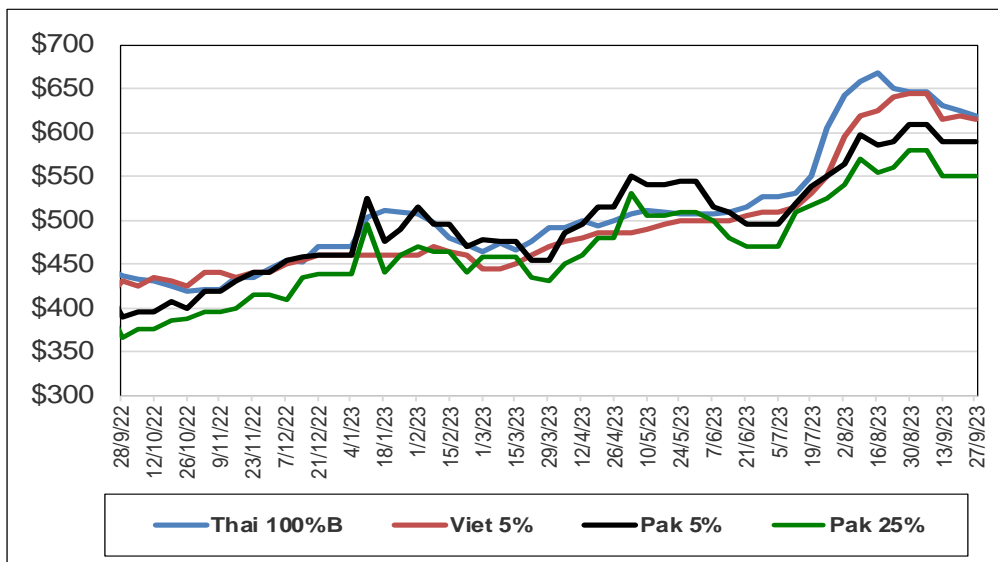
***From September 1, 2023 to September 27, 2023***





## International prices

(\$/tonnes)



## Weekly prices

| Milled rice international FOB quotes |               |       |
|--------------------------------------|---------------|-------|
| Exchange rate                        | €1 = \$1.0536 |       |
| Asian Markets                        | \$/t          | €/t   |
| Thai 100%B                           | 619           | 588   |
| Vietnam 5%                           | 615           | 584   |
| India 5%                             | export ban    | N.A.  |
| Pakistan 5%                          | 590           | 560   |
| Pakistan 25%                         | 550           | 522   |
| Myanmar 5%                           | 635           | 603   |
| Pakistan Basmati S. Kernel           | 1,170         | 1,110 |
| India Basmati min.exp.price          | 1,200         | 1,139 |
| Other Markets                        | \$/t          | €/t   |
| Uruguay 5%                           | 740           | 702   |
| Argentina 5%                         | 730           | 693   |
| Brasile Type 1                       | 710           | 674   |
| USA LG 2/4% Fob US Gulf              | 780           | 740   |
| California MG 1/4% - Med -           | 1,100         | 1,044 |

Source: Creed Rice Co