



## News

### Increased controls on rice from Pakistan (Source: Ente Risi note)

Official controls carried out by member states have shown a high rate of non-compliance with the relevant requirements of EU legislation regarding aflatoxin and ochratoxin A contamination for rice imported from Pakistan, which is why with Implementing Regulation (EU) 2023/174 of January 26, 2023, the European Commission has determined that from mid-February, the frequency of aflatoxin and ochratoxin A controls for rice imported from Pakistan will increase from the current 5% to 10%.

### Efsa gives green light to raising tricyclazole residue on rice (Source: Ente Risi note)

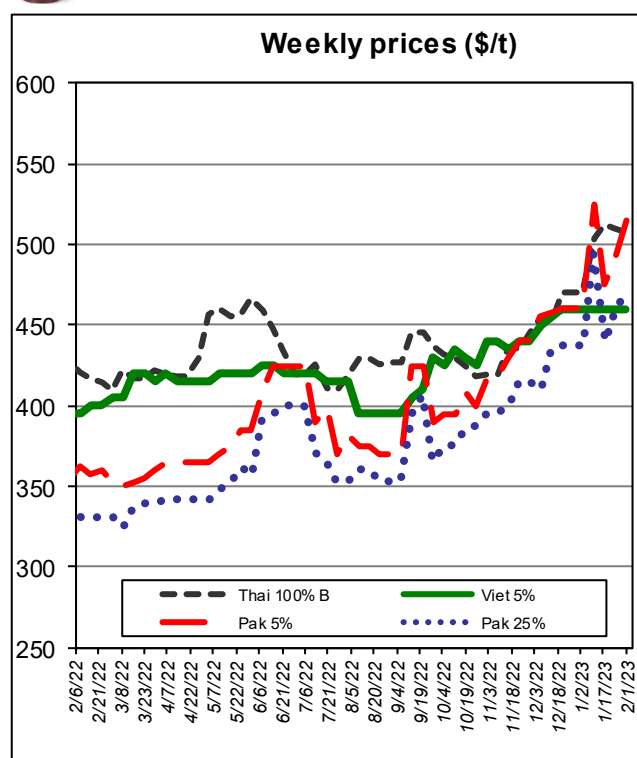
In late January, EFSA published an opinion giving the green light to raise the maximum residual limit (MRL) of Tricyclazole on rice from the current 0.01 mg/kg (limit of quantification) to 0.09 mg/kg.

It now awaits a vote in the Scopaff Committee where Member State representatives can decide whether to approve the MRL raising.

## International Markets



Milled rice international FOB quotes		
Exchange rate 1 € = 1.0894\$		
Asian Markets	\$/t	€/t
Thai 100%B	508	466
Vietnam 5%	460	422
India 5%	435	399
Pakistan 5%	515	473
Pakistan 25%	470	431
Myanmar 5%	470	431
Pakistan Basmati S.Kernel	1,258	1,155
India Basmati Pusa	1,550	1,423
Other Markets	\$/t	€/t
Uruguay 5%	565	519
Argentina 5%	510	468
Brasile Type 1	640	587
USA LG 2/4% Fob Bulk Nola	780	716
California MG 1/4% Med	1,650	1,515



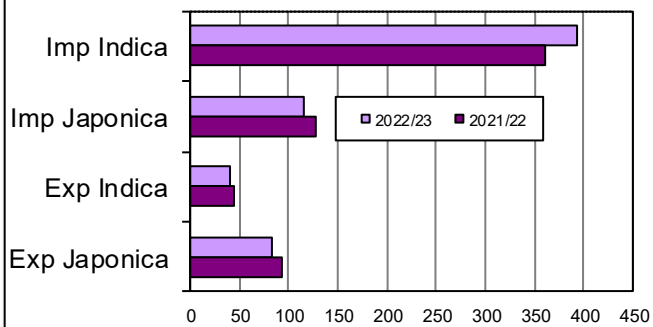
## Food Safety

### Rapid Alert System (Source: EFSA)

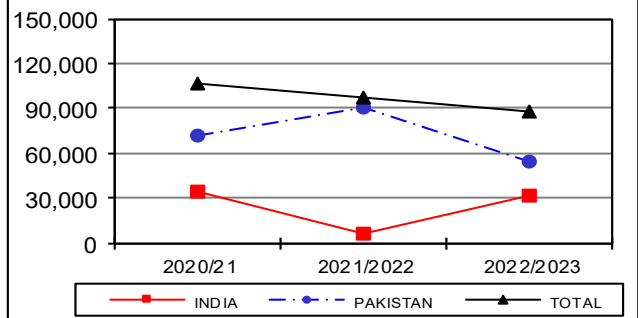
- An information for attention was sent by Switzerland concerning chlorpyrifos (0.0295±0.015 mg/kg - ppm) in roasted rice flour from India.
- An alert was sent by Finland concerning too much cadmium (0.23 mg/kg - ppm) in rice from Italy.
- An information for attention was sent by Switzerland concerning tricyclazole (0.080±0.040 mg/kg - ppm) in red long grain rice from India.
- A border rejection notification was sent by Greece concerning unauthorised substance hexaconazole (0.026±0.013 mg/kg - ppm) in rice from Pakistan.
- An information for follow up was sent by Germany concerning migration of MOSH and MOAH (0.71 mg/kg - ppm) from packaging material into rice from Pakistan.

# European Market

**Import Export EU** ('000 tonnes milled rice equivalent)



**Basmati husked rice imports** (in tonnes)



## In focus

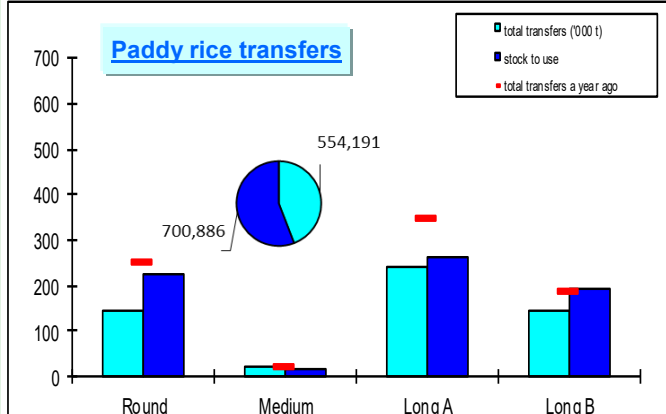
Data provided by the European Commission, based on the quantities actually cleared through customs, show that the 27 EU countries imported about 509,500 tons, in milled equivalent, compared to about 488,900 tons a year ago, marking an increase of 20,600 tons (+4%). Imports of Japonica rice, about 115,100 tons, are down about 12,900 tons (-10%) from the previous marketing year, while imports of Indica rice, about 394,400 tons, are up about 33,600 tons (+9%).

Imports of Basmati husked rice total about 87,500 tons, of which about 55,100 tons are of Pakistani origin and about 32,400 tons are of Indian origin, resulting in a decrease of 7,000 tons (-7%) from the previous marketing year.

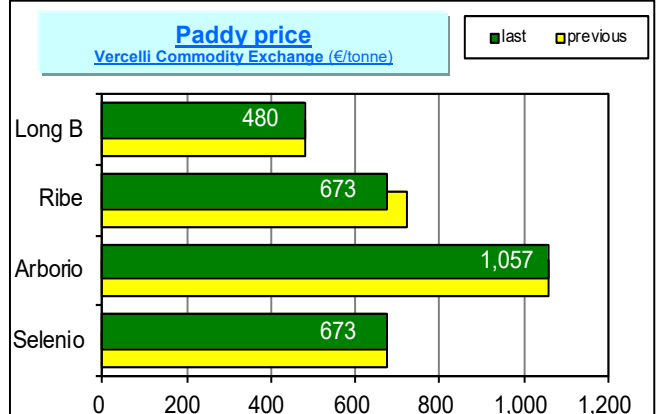
Exports stand at about 123,800 tons, in milled equivalent, down 14,300 tons (-10%) from last marketing year.

# Italian Market

**Paddy rice transfers**



**Paddy price**  
Vercelli Commodity Exchange (€/tonne)



## In focus

This week producers transferred 27,490 tons of paddy rice, including: 9,582 of "long A," 9,423 of "long B," 7,649 of "round" and 836 of "medium." Since the beginning of the campaign, there is a total transfer of 554,191 tons, down 258,118 tons (-32%) from the previous campaign. It turns out that 44% of the saleable availability is placed.

At the Vercelli Exchange there is a decrease of 48 €/t for Ribe.

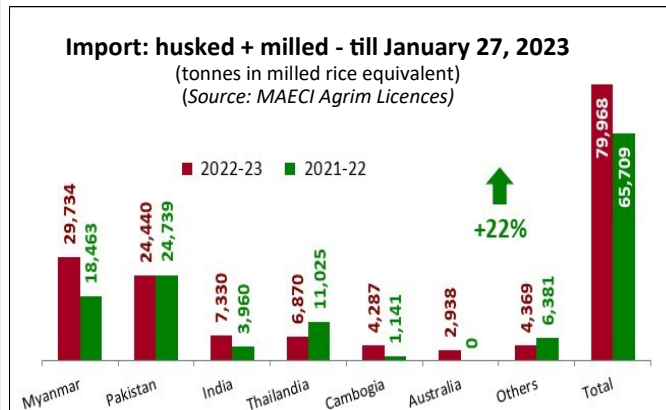
Operators requested import licenses for husked and semi-milled/milled rice for a volume of 79,968 tons, in milled equivalent, up 14,259 tons (+22%) from the previous marketing year.

The table on volumes actually cleared through customs will be published again only when the table prepared by the European Commission is updated.

Exports amounted to 56,881 tons, in milled equivalent, down 20,675 tons (-27%) from the previous campaign.

**Import: husked + milled - till January 27, 2023**

(tonnes in milled rice equivalent)  
(Source: MAECI Agrim Licences)



**Export: husked + milled - till January 27, 2023**

(tonnes in milled rice equivalent)  
(Source: Ente Risi Declarations)

