



News

Decree allocating 15 million euros to rice farmers published (Source: Ente Risi Note)

The decree of 16 September 2022 was published, allocating 15 million euros for Italian rice growers for which the Ente Nazionale Risi provided technical-economic support to justify the measure.

It is an aid to partially compensate for the higher costs incurred by rice growers as a result of Russia's aggression against Ukraine, which has led to a record increase in the prices of agricultural inputs, further aggravating the difficult situation created by the extraordinary drought that has hit Italy hard this year and has compromised some productions, such as precisely, that of rice.

The aid is determined on the basis of the hectares of land cultivated in the 2022 marketing year. Beneficiaries will be granted aid of up to 100 euros for each hectare cultivated with rice in the 2022 marketing year and until the available resources are exhausted. The unit amount of aid is determined based on the ratio between the amount of funds allocated and the number of hectares for which the application for aid recognition will have been submitted.

On November 2, AGEA issued procedures on how to grant the aid, which is intended for farms that grew rice in 2021 and 2022.

Rice farms will be able to submit the application to AGEA from November 25 to December 9.

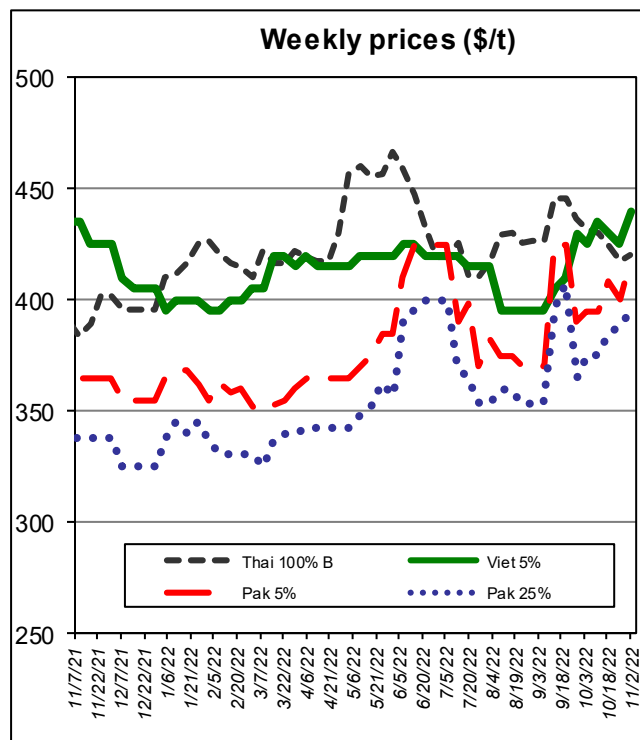
[Link to Agea circular - operational instructions -](#)

[Link to the payment application](#)

International Markets



Milled rice international FOB quotes		
Exchange rate 1 € = 0.9908\$		
Asian Markets	\$/t	€/t
Thai 100%B	420	424
Vietnam 5%	440	444
India 5%	385	389
Pakistan 5%	418	422
Pakistan 25%	395	399
Myanmar 5%	420	424
Pakistan Basmati S. Kernel	1,200	1,211
India Basmati Pusa	1,450	1,463
Other Markets	\$/t	€/t
Uruguay 5%	545	550
Argentina 5%	500	505
Brasile Type 1	560	565
USA LG 2/4% Fob Bulk Nola	710	717
California MG 1/4% Med	1,625	1,640



Food Safety

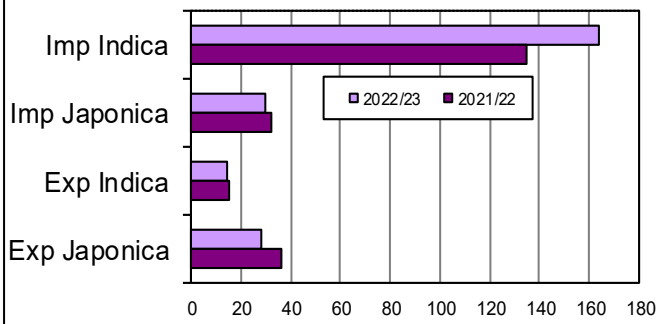
Rapid Alert System (Source: EFSA)

- An alert was sent by Netherlands concerning Ochratoxine A (3.5 - 5.8 µg/kg - ppb) in Basmati rice from (the origin was not specified).
- An information for attention was sent by Spain concerning Aflatoxin B1 (126.51 +/- 42.81 µg/kg - ppb) in rice protein from Pakistan.

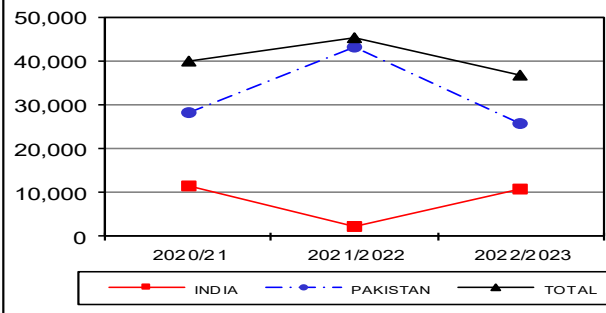
European Market



Import Export EU ('000 tonnes milled rice equivalent)



Basmati husked rice imports (in tonnes)



In focus

Based on the latest data provided by the Commission, imports amount to about 194,000 tons, in milled equivalent, showing an increase of about 26,500 tons (+16%) from a year ago.

Imports of Indica-type rice, at about 164,000 tons, show an increase of about 28,800 tons (+21%), while imports of Japonica-type rice stand at about 30,000 tons and show a decrease of about 2,300 tons (-7%).

Import license applications for Basmati husked rice stand at 36,871 tons, down 8,578 tons (-19%) from a year ago.

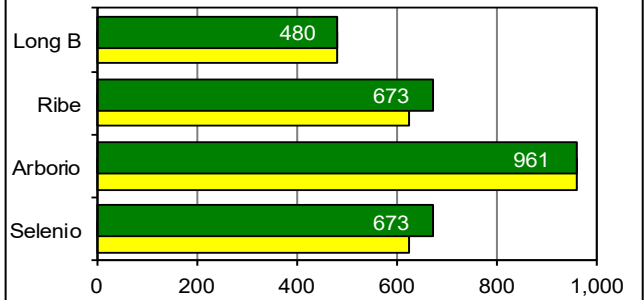
Exports are down about 9,400 tons (-18%), having fallen from about 51,800 tons a year ago to about 42,400 tons now. At about 19,400 tons, Italy appears to be the leading exporting country within the EU.

Italian Market

Paddy rice transfers

TYPE OF RICE	CAMPAIGN	
	2022/23 tonnes	2021/22 tonnes
ROUND	46,543	93,389
MEDIUM	8,782	9,131
LONG A	109,677	150,020
LONG B	63,316	88,378
TOTAL	228,318	340,918

Paddy price
Vercelli Commodity Exchange (€/tonne)



In focus

This week's paddy rice transfers involved 10,678 tons of "long A," 5,686 tons of "long B," 5,533 tons of "round" and 1,173 tons of "medium" for a total of 23,070 tons. Comparison with the previous marketing year shows a contraction of 112,600 tons (-33%).

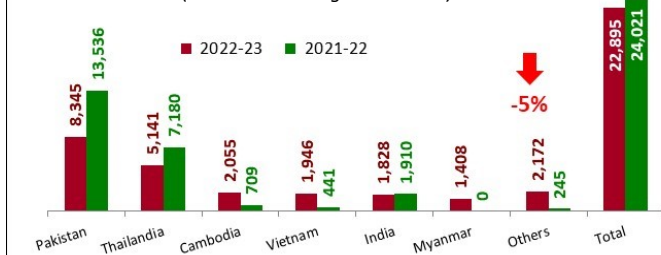
Paddy rice prices refer to last week as the Vercelli Commodity Exchange was closed for holidays on Nov. 1.

Import licenses were issued in Italy for husked and semi-milled/milled rice for a quantity of 22,895 tons, in milled equivalent, marking a decrease of 5%. Compared to last year there is a greater diversification of the origins of the imported product; under "Others" the following countries are included: Guyana (896 t), Australia (345 t), Paraguay (323 t), Uruguay (150 t), Brazil (121 t) and the United States (104 t). Quantities actually cleared through customs are down 7% as shown in the table at the bottom of the page.

Exports stand at 23,459 tons, in milled equivalent, down 24% from a year ago. The negative trend affects all major destinations, except for Ukraine, whose flows have been rising sharply since the conflict with Russia began.

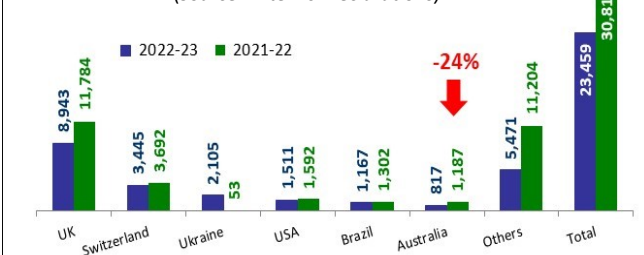
Import: husked + milled - till October 28, 2022

(tonnes in milled rice equivalent)
(Source: MAECI Agrim Licences)



Export: husked + milled - till October 28, 2022

(tonnes in milled rice equivalent)
(Source: Ente Risi Declarations)



Italian imports till October 29, 2022 - Customs declarations - Source: DG Agri (tonnes in milled rice equivalent)

Campaign	Paddy			Brown rice			Semi-milled / Milled rice			TOTAL		
	Indica	Japonica	Total	Indica	Japonica	Total	Indica	Japonica	Total	Indica	Japonica	TOTAL
2022/2023	-	-	-	5,651	781	6,432	7,843	3,566	11,409	13,494	4,347	17,841
2021/2022	1,104	-	1,104	9,967	3	9,970	7,515	579	8,094	18,586	582	19,168

Ente Nazionale Risi - Milan

c.f. 03036460156 www.enterisi.it e-mail: info@enterisi.it tel. +39 02.88.55.111 fax +39 02.30.13.10.84