



News

India and EU resume free trade talks after nearly decade-long freeze (Source: asia.nikkei.com)

India and the European Union formally relaunched free trade agreement negotiations on Monday, ending a nearly decade-long hiatus and aiming to reach an agreement by the end of 2023.

Imports into the EU of milled rice already packaged are on the rise (Source: Ente Risi note)

At the June 30 Management Committee meeting, the Commission presented the usual market situation in which it appears that from September 1, 2021 to May 31, 2022:

- imports to the EU of milled rice in small packages (up to 5 kg) increased by 21 percent;
- imports into the EU of milled rice in packages over 5 kg but not over 20 kg increased by 35%.

Spain: rice area down 16 percent (Source: Ente Risi Note)

The European Commission informed the Management Committee that due to the drought, Spain estimates a rice area of about 72,000 hectares, down 16 percent from the already reduced area in 2021.

International Markets

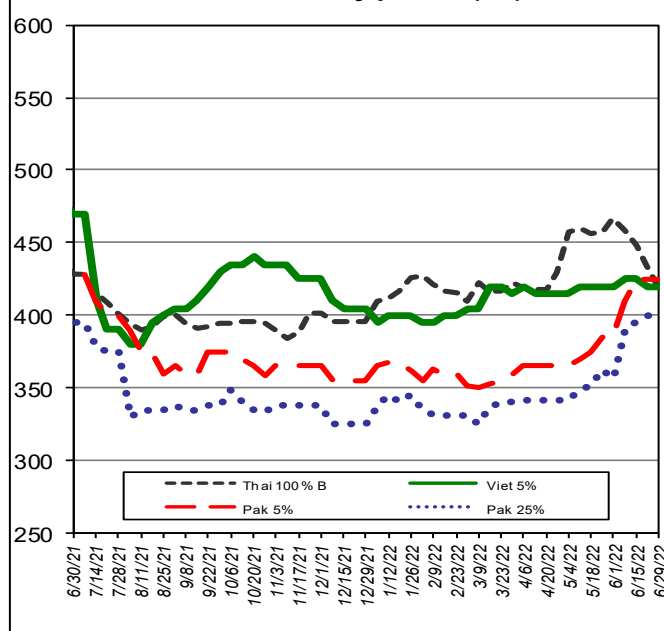


Milled rice international FOB quotes

Exchange rate 1 € = 1.0517\$

Asian Markets	\$/t	€/t
Thai 100%B	419	398
Vietnam 5%	420	399
India 5%	350	333
Pakistan 5%	425	404
Pakistan 25%	400	380
Myanmar 5%	425	404
India Basmati trad.	NA	NA
Other Markets	\$/t	€/t
Uruguay 5%	545	518
Argentina 5%	510	485
Brasile Type 1	580	551
USA LG 2/4% Fob Bulk Nola	685	651
California MG 1/4% Med	1,410	1,341

Weekly prices (\$/t)



Food Safety

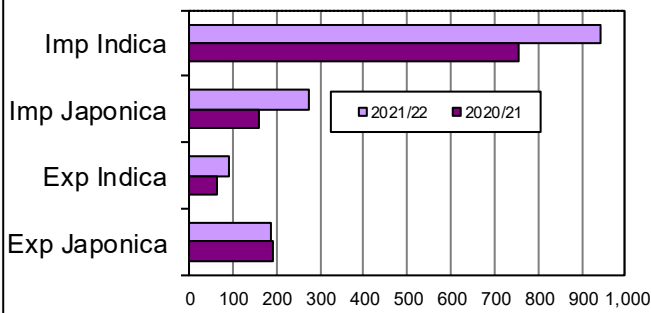
Rapid Alert System (Source: EFSA)

- A border rejection was sent by Netherland concerning aflatoxin B1 (4.7 µg/kg - ppb) in rice from Pakistan.
- A border rejection was sent by Netherland concerning aflatoxin B1 (7.1 µg/kg - ppb) in rice from Pakistan.
- An alert was sent by Belgium concerning presence of gluten (54.9 mg/kg - ppm) in rice flour from Turkey with mention "gluten free".
- A border rejection was sent by Belgium concerning thiamethoxam (0.078 mg/kg - ppm) e (tricyclazole 0.17 mg/kg - ppm) in rice from India.
- An information for follow up was sent by Germany concerning thiamethoxam (0.066 ± 0.033 mg/kg - ppm) e tricyclazole (0.096 ± 0.048 mg/kg - ppm) in rice from India.

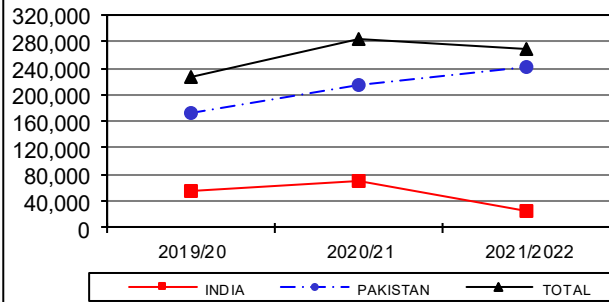
European Market



Import Export EU ('000 tonnes milled rice equivalent)



Basmati husked rice imports (in tonnes)

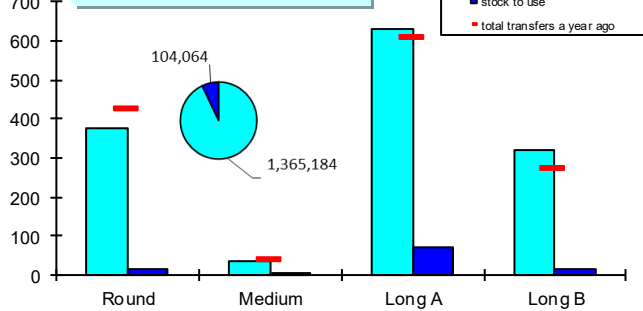


In focus

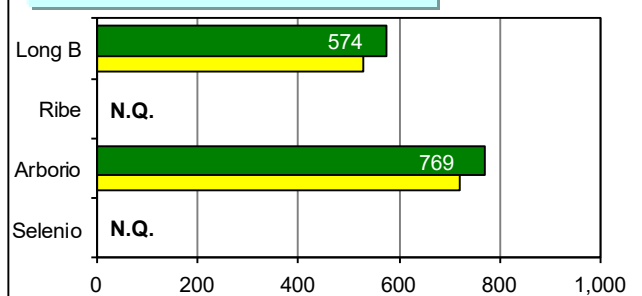
Based on actual quantities cleared through customs, it appears that the 27 EU countries imported about 1,220,000 tons, in milled equivalent, compared to about 914,000 tons (excluding the United Kingdom) a year ago, marking an increase of about 306,000 tons (+34%). Imports of semi-milled/milled rice amounted to about 775,000 tons, up about 290,000 tons (+60%) from a year ago and covering 64% of the total quantity cleared through customs in the Union. With about 236,000 tons, Myanmar is the main supplier of milled rice followed by Thailand with about 143,000 tons and Cambodia with about 133,000 ton. Basmati husked rice imports amount to 268,663 tons, of which 242,889 tons are of Pakistani origin and 25,774 tons are of Indian origin. Total imports are down by 14,145 tons (-5%). Exports stand at about 281,000 tons, in milled equivalent, of which about 117,000 tons are destined for the United Kingdom, and show an increase of about 22,000 tons (+9%) from the previous marketing year. If, for the 2020/2021 marketing year, we integrate the volumes exported to the UK in the pre-Brexit period from 1/9/2020 to 31/12/2020, exports are, on the contrary, down by about 48,000 tons (-15%).

Italian Market

Paddy rice transfers



Paddy price
Vercelli Commodity Exchange (€/tonne)



In focus

This week's paddy rice transfers involved 5,588 tons of "long A," 4,565 tons of "long B," 2,431 tons of "round" and 246 tons of "medium," for a total of 12,830 tons. Since the beginning of the marketing year, 1,365,184 tons of paddy have been transferred, marking an increase of 8,232 tons (+1%) over last year. The increases are in the "long B" (+42,522 t; +15%) and "long A" (+19,572 t; +3%) segments, while the "round" and "medium" segments show decreases of 47,757 tons (-11%) and 6,105 tons (-14%), respectively. 104,064 tons remain to be placed.

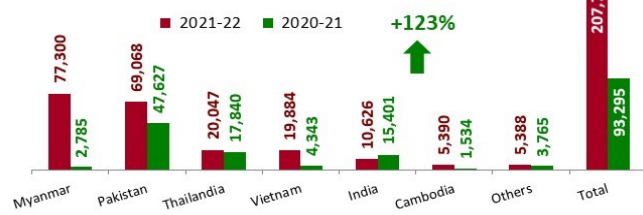
At the Vercelli Exchange there is an increase in the listing of Arborio (+\$48) and Lungo B (+\$45).

The total volume of titles issued in the current campaign amounts to 207,703 tons, in milled equivalent, up 114,408 tons (+123%) from the last campaign. Myanmar and Pakistan, with 77,300 and 69,068 tons, respectively, appear to be Italy's main trading partners, covering 70% of the total licenses issued. Quantities actually cleared through customs show an increase of 70,427 tons (+67%) compared to last year. See table at the bottom of the page.

Based on declarations issued by the Ente Nazionale Risi, exports stand at 154,064 tons, milled equivalent, an increase of 20,714 tons (+17%) over the previous year. The increase is driven by volumes destined for the UK (60,072 t), which last year were considered as exports only from January 1, 2021.

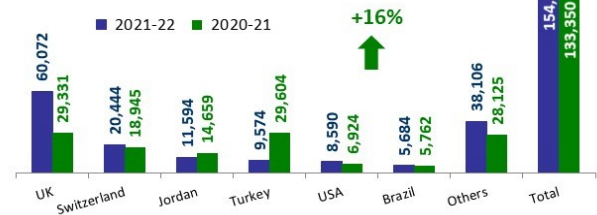
Import: husked + milled - till June 30, 2022

(tonnes in milled rice equivalent)
(Source: MAECI Agrim Licences)



Export: husked + milled - till June 30, 2022

(tonnes in milled rice equivalent)
(Source: Ente Risi Declarations)



Italian imports till June 26, 2022 - Customs declarations - Source: DG Agri (tonnes in milled rice equivalent)

Campaign	Paddy			Brown rice			Semi-milled / Milled rice			TOTAL		
	Indica	Japonica	Total	Indica	Japonica	Total	Indica	Japonica	Total	Indica	Japonica	TOTAL
2021/2022	9,548	-	9,548	42,912	2,038	44,950	68,958	52,450	121,408	121,418	54,488	175,906
2020/2021	16,753	-	16,753	40,741	553	41,294	44,445	2,987	47,432	101,939	3,540	105,479

Ente Nazionale Risi - Milan

c.f. 03036460156 www.enterisi.it e-mail: info@enterisi.it tel. +39 02.88.55.111 fax +39 02.30.13.10.84