



## Rice industry and trade News



Year 14°- n. 156  
November 2024  
Editor in chief  
Dr. Roberto Magnaghi



# News

## **India: all export limits removed** (Source: [www.thehindubusinessline.com](http://www.thehindubusinessline.com))

The Indian government has removed all limits on rice exports, retaining only the ban on broken rice.

This move, the second within a month, will allow India to increase rice exports, giving the market a new impetus; export volumes of rice could reach 22 million tonnes by March 2025. This decision, welcomed by the Exporters Association, will also alleviate the problem of storage warehouses overflowing with rice stocks even in anticipation of a record production of 137.83 million tonnes.

The bans, placed in place from September 2022, caused world prices to rise to the \$600/tonne mark, favouring countries such as Thailand, Vietnam and Pakistan.

Now, prices have already fallen below \$575/t, except in the US.

## **World rice exports will rise to 56.3 million tonnes**

(Source: [www.vietnam.vn](http://www.vietnam.vn))

On 22 October, citing data from the Rice Outlook Report recently released by the United States Department of Agriculture (USDA), the Vietnam Trade Office in Houston (US) said world rice prices are expected to fall in 2025 due to increased supply.

India, the world's largest rice exporter, lifted its export ban on non-Basmati regular white rice, ushering in a period of abundant supply and more affordable prices for global consumers.

India's return to the market is expected to help stabilise global rice prices, benefiting importing countries.

Also according to the USDA report, world rice production in the 2024-2025 season is expected to reach a record figure of 530.4 million tonnes, up 3.1 million tonnes from the previous forecast.

The USDA report paints an optimistic picture for the global rice market in 2025. More abundant supplies, more competitive prices and stable demand are expected to benefit consumers and contribute to global food security. However, it also points out that competition is increasing in the global rice market.

# Food Safety

## **Rapid Alert System**

- A border rejection was sent by Netherlands concerning (Thifluzamide (0.032 mg/kg - ppm) in rice from India.
- A border rejection was sent by Spain concerning Ochratoxin A ( $6.25 \pm 17.9$  µg/kg - ppb) and Aflatoxin B1 ( $3.6 \pm 24.2$  % µg/kg – ppb) in rice from Pakistan.



# **Italian market**

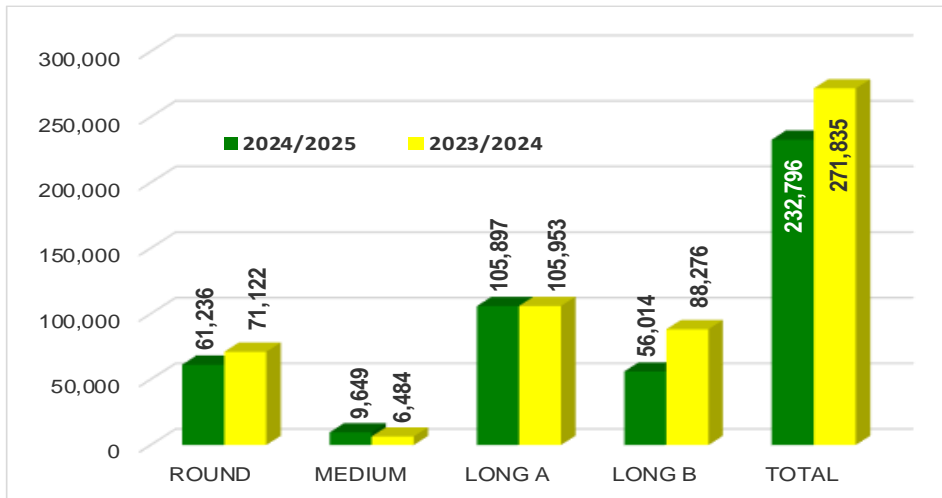
***Campaign 2024/2025***

***From September 1<sup>st</sup> to October 29, 2024***



## Paddy rice transfers

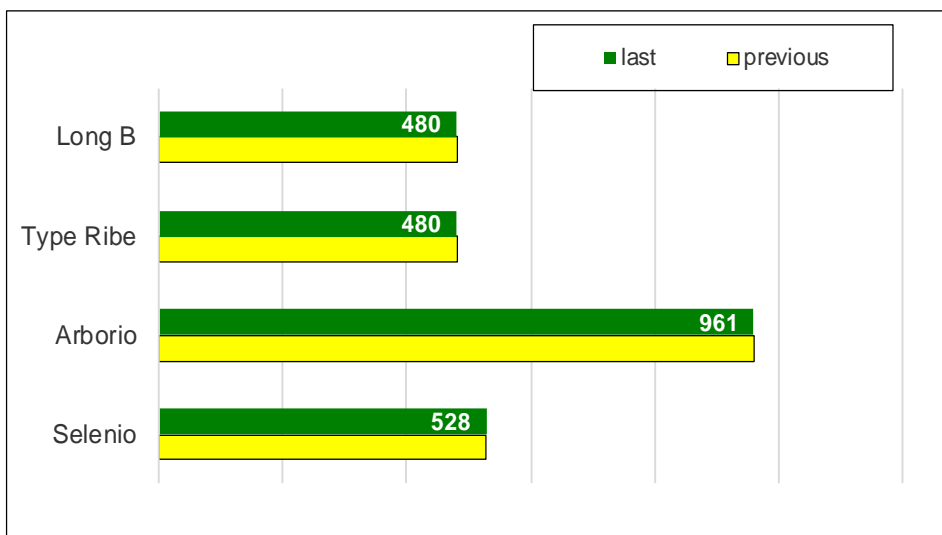
(in tonnes)



This week 36,167 tonnes were transferred, of which 16,910 tonnes of 'long A', 9,344 tonnes of 'round', 9,045 tonnes of 'long B' and 868 tonnes of 'medium'.

The total volume transferred amounts to 232,796 tonnes, down by 39,039 tonnes (-14%) compared to the previous marketing year.

## Paddy prices Vercelli (€/t)



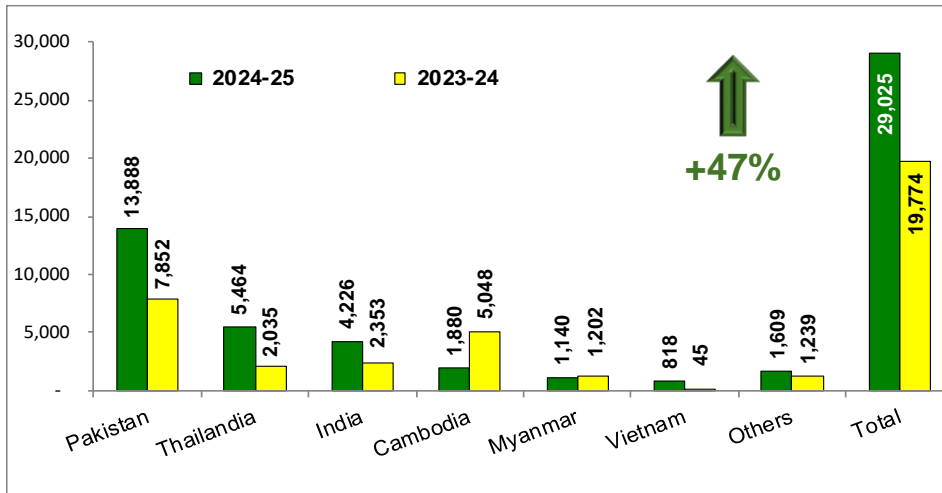
On the Vercelli Commodity Exchange the reference quotations are unchanged from previous week.



## Import: husked + milled

tonnes in milled rice equivalent

(Source: MAECI Agrim Licences)



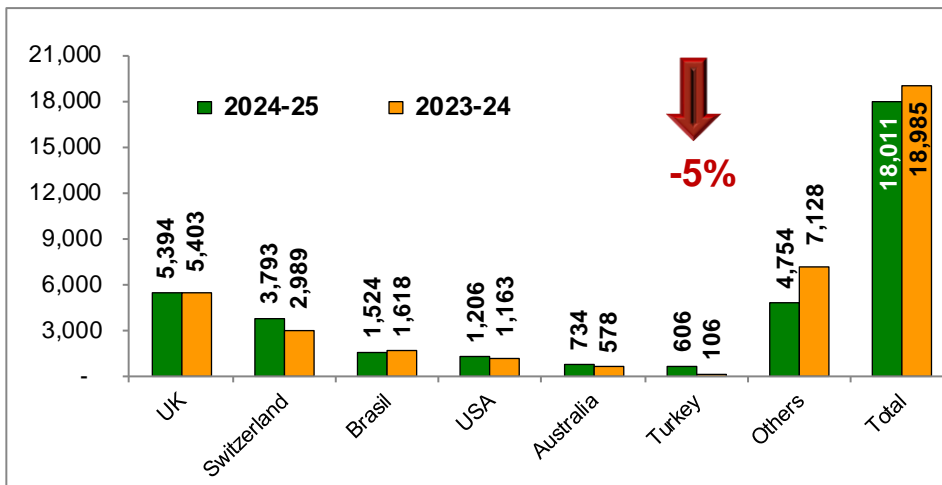
Operators applied for import licences for a quantity of 29,025 tonnes, in milled rice equivalent, compared to 19,774 tonnes a year ago, an increase of 9,251 tonnes (+47%). Imports of Indica rice account for 99% of the total and are up by about 9,200 tonnes (+47%) from the previous marketing year.

Imports of husked, in milled rice equivalent, amount to 8,346 tonnes, of which 7,200 tonnes were Basmati rice, while imports of semi-milled/milled rice amount to 20,679 tonnes.

## Export: husked + milled

tonnes in milled rice equivalent

(Source: ENTE RISI Declaration)



Overall, exports amount to 18,011 tonnes, in milled rice equivalent, down from a year ago (-974 t; -5%).

Exports to all major destinations are increasing, especially to the UK, Switzerland and Turkey.



# **European Union market**

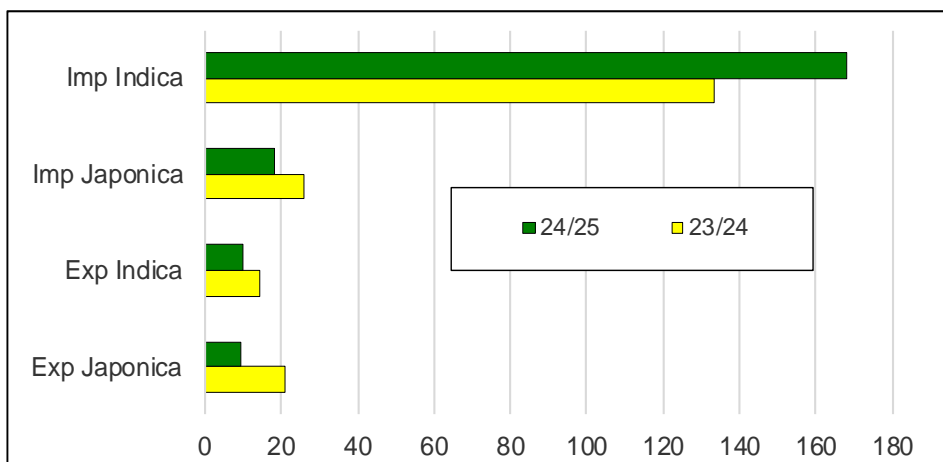
***Campaign 2024/2025***

***From September 1<sup>st</sup> to October 20, 2024***



## Import Export EU

(\*000 tonnes milled rice equivalent)



Imports into the EU - almost 186,200 tonnes, in milled rice equivalent - were up by about 26,800 tonnes (+17%) compared to a year ago.

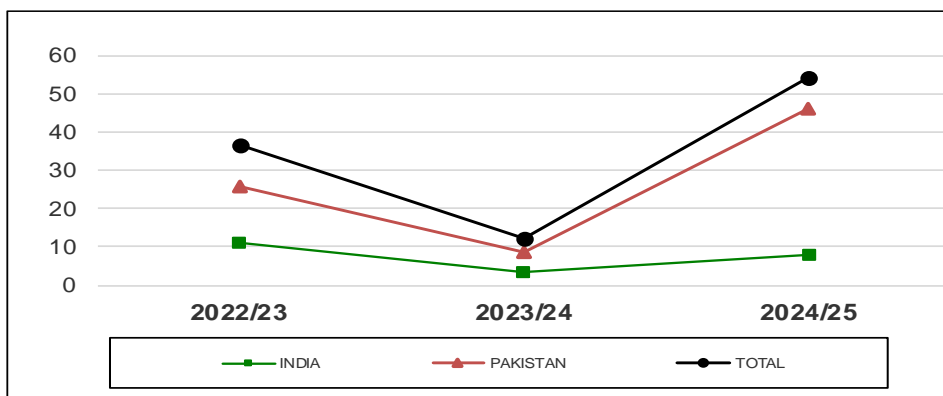
Imports of Japonica-type rice, at around 18,000 tonnes, show a decrease of more than 8,000 tonnes (-31%), while imports of Indica-type rice, at around 168,100 tonnes, show an increase of almost 34,900 tonnes (+26%).

Whereas export figures are incomplete as several Member States have not provided an update, the volumes destined for Third Countries amount to 19,213 tonnes, in milled rice equivalent, and show a decrease of 15,627 tonnes (-45%) compared to the previous marketing year.

The largest drop concerns the export of Japonica rice which, at just over 9,300 tonnes, shows a decrease of almost 11,500 tonnes (-55%).

## Basmati husked rice imports

(\*000 tonnes)



Imports of Basmati husked rice amount to 54,210 tonnes, of which 46,103 tonnes were of Pakistani origin and 8,107 tonnes of Indian origin, an increase of 42,091 tonnes (+347%) compared to last year.

Imports of Pakistani Basmati rice were up by 37,340 tonnes (+426%), also at a higher level than in 2022/23 (+25,215 tonnes; +78%). The Indian Basmati rice import figure shows an increase of 4,750 tonnes (+142%) compared to a year ago.



# **International markets**

***Campaign 2024/2025***

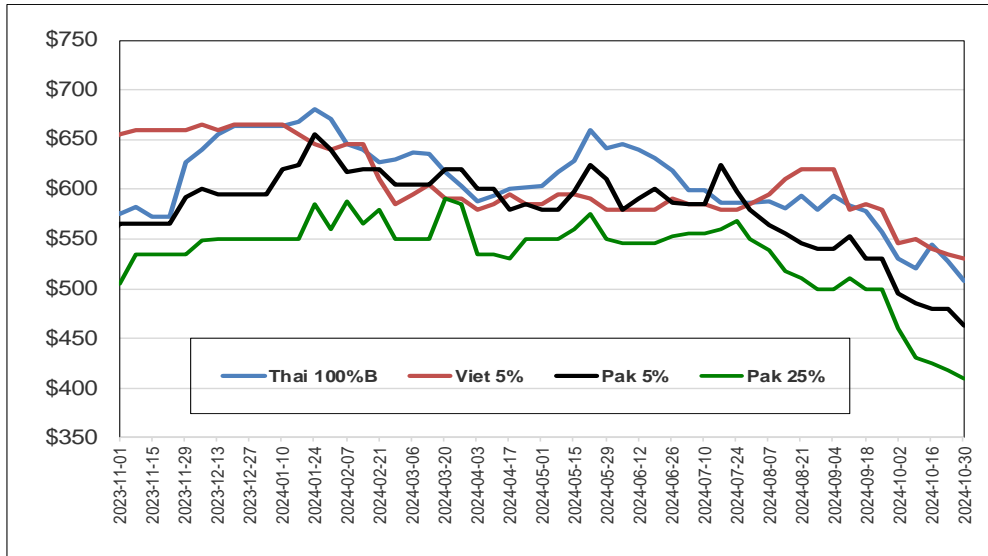
***From September 1<sup>st</sup> to October 30, 2024***





## International prices

(\$/tonnes)



## Weekly prices

<b>Milled rice international FOB quotes</b>		
<b>Exchange rate</b>	<b>€1 = \$1.0774</b>	
<b>Asian Markets</b>	<b>\$/t</b>	<b>€/t</b>
Thai 100%B	508	472
Vietnam 5%	530	492
India 5%	470	436
Pakistan 5%	463	430
Pakistan 25%	410	381
Myanmar 5%	520	483
Pakistan Basmati S. Kernel	895	831
Pusa Basmati India	1,050	975
<b>Other Markets</b>	<b>\$/t</b>	<b>€/t</b>
Uruguay 5%	770	715
Argentina 5%	790	733
Brazil Type 1	780	724
USA LG 2/4% Fob US Gulf	820	761
California MG 1/4% - Med -	835	775